

Part #4413

2013-2014 Ford Mustang GT500 Style Upper Grille

Notice: Install new parts according to these instructions!
Altered Parts are Non-Refundable!

Step 1

Follow these instructions to remove the front bumper. Remove the 4 plastic push pins and the 4 silver bolts along the top of the bumper. Remove the black plastic radiator cover. Remove 3 screws in each wheel well. Remove the 12 screws along the bottom front edge of the bumper. Lightly pull on the sides of the front bumper where it meets with the fenders this will release the bumper. Now all the hardware has been removed.

DO NOT REMOVE BUMPER UNTIL STEP 2 IS COMPLETE!

Step 2

Pull on the plastic inner wheel wells to gain access to the back side of the fog lights and turn signals. Reach inside and disconnect the light bulb/plug from the light housing. Begin to remove the bumper by pulling upward then pulling forward to clear the foam reinforcement behind the bumper. Now you have gained access to temperature sensor; remove from the lower grille.

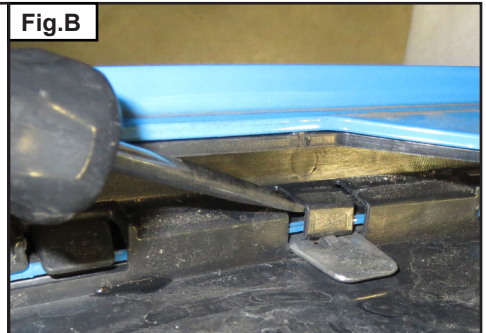
Step 3

Once the bumper is completely removed attach the sensor to the rubber shroud as shown in Fig. A (**only do this step if your're also installing Part #4414 Lower Grille**).



Step 4

To remove the upper grille apply a small amount of pressure using a flat head screw driver to release the locking tabs as shown in Fig.B while applying some pressure to the backside of the grille. That will push the grille forward to loosen each locking tab. Once the tabs are unlocked the grille can be removed.



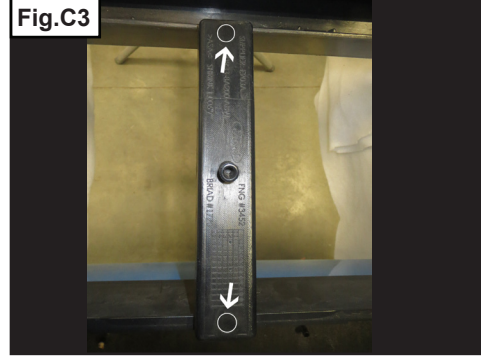
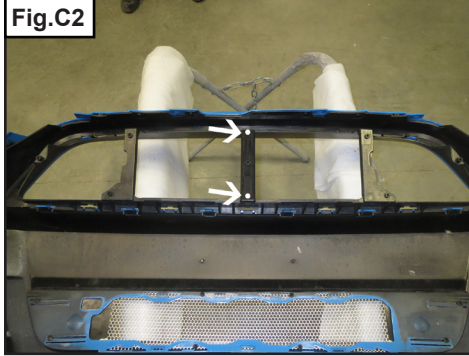
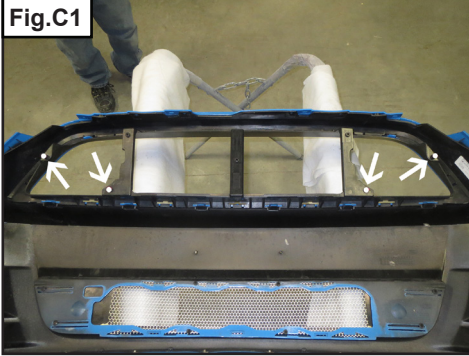
PART #4413

QTY	DESCRIPTION	HARDWARE #
1	ROUND SCREEN	023L
1	ROUND SCREEN	023R
1	HEXAGON SCREEN	023C
20	BLACK PHILLIPS SCREWS	10947-01704
6	SILVER PHILLIPS SCREWS	90190A246



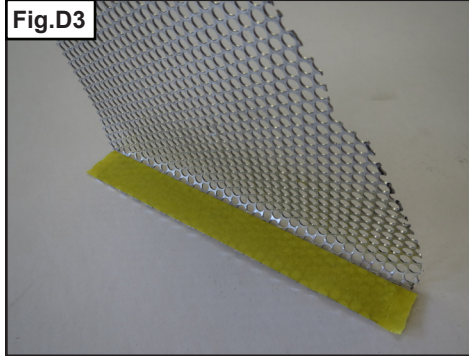
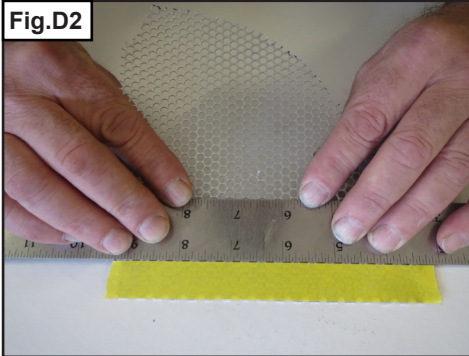
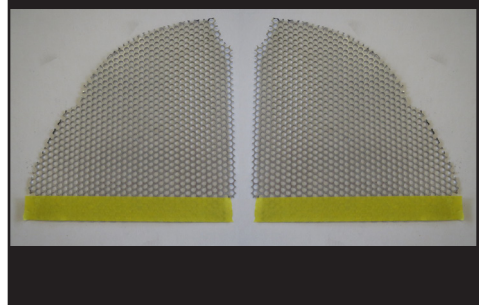
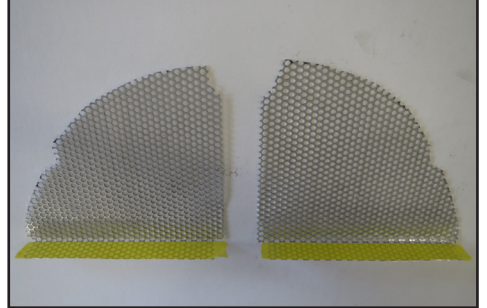
Step 5

Drill the holes as indicated in Fig. C1 with a 3/16" drill bit. Also drill the center of the 2 round circles in the center bar as shown in Fig. C2 & C3. with a 3/16" drill bit.

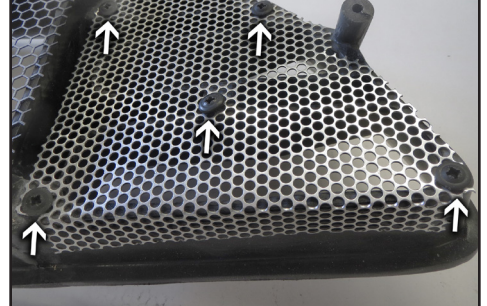
**Step 6**

Please read over each step before continuing. The screens need to be bent correctly for proper installation!

- 1 - Set the screens side by side as to mirror each other.
- 2 - Place a piece of 3/4" masking tape on each screen as shown in Fig.D1.
- 3 - Hold a ruler or straight edge on the screen as shown in Fig.D2.
- 4 - While holding the ruler/straight edge bend the screen as shown in Fig.D3.
- 5 - Each screen needs to be bent opposite of each other as shown in Fig.D4.

Fig.D1**Fig.D4****Step 7**

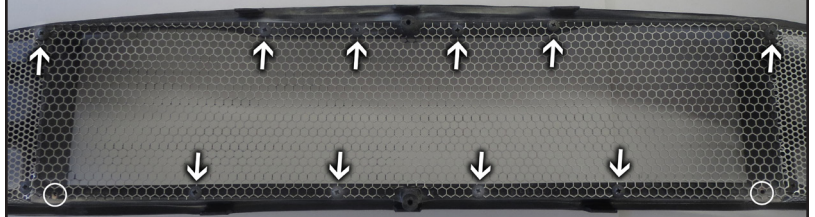
Install the side screens using the 10 small black screws provided in the hardware packet as shown in Fig.E.

Fig.E

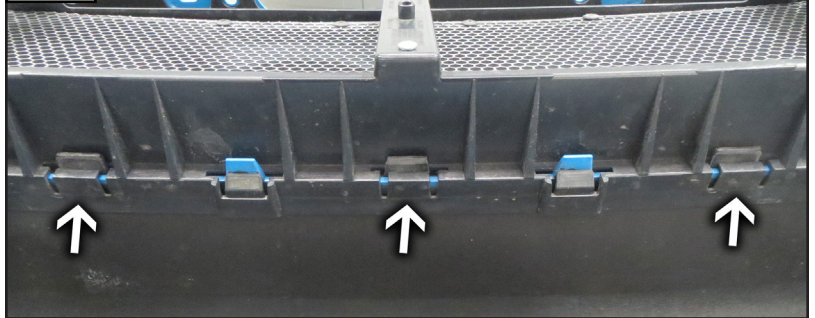
Step 8

Install the center screen using the 10 small black screws provided in the hardware packet as shown in Fig.F.

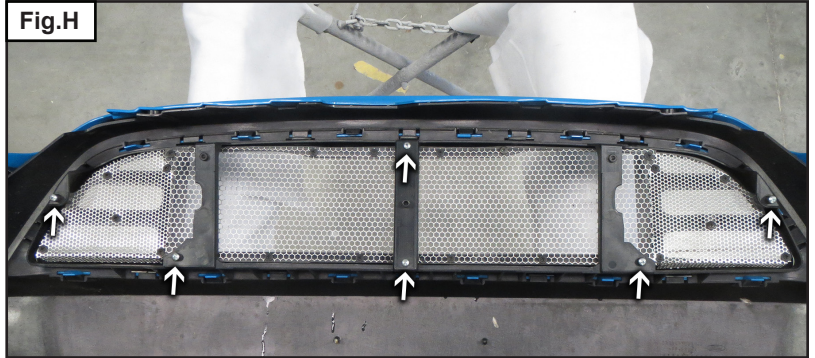
DO NOT install screws in the areas indicated with a circle in Fig.F.

Fig.F**Step 9**

When installing the grill to the bumper first line up the 3 tabs on the bottom of the grill with the openings in the bumper as shown in Fig.G.

Fig.G**Step 10**

Install the 6 silver screws to secure the grill to the bumper as shown in Fig.H.

Fig.H**Step 11**

Reinstall your factory bumper.

