



**2010-12 Mustang GT Splitter Bracket Kit  
M-17A626-MB  
INSTALLATION INSTRUCTIONS**

NO PART OF THIS DOCUMENT MAY BE REPRODUCED WITHOUT PRIOR AGREEMENT AND WRITTEN PERMISSION OF FORD RACING PERFORMANCE PARTS

**!!! PLEASE READ THE FOLLOWING INSTRUCTIONS CAREFULLY PRIOR TO INSTALLATION !!!**

**Caution: If you are not confident that you can complete the installation safely, have it completed by a certified technician! Failure to complete the installation correctly could cause damage to your vehicle.**

**The following instructions apply to a 2010/12 Mustang with VP / California Special lower grill insert. If vehicle is not equipped with this lower grill insert the part is available from Ford Motor Company dealerships Part Number CR3Z-17626-AB.**

**The Mustang GT Splitter Bracket Kit M-17A626-MB is intended to be used in conjunction with the Mustang Boss Laguna Seca Edition Splitter part number M-16601P-MB which is referenced in the following instruction set for clarity.**

**Techline (800) FORD788**

Factory Ford shop manuals are available from Helm Publications, 1-800-782-4356



# 2010-12 Mustang GT Splitter Bracket Kit M-17A626-MB INSTALLATION INSTRUCTIONS

NO PART OF THIS DOCUMENT MAY BE REPRODUCED WITHOUT PRIOR AGREEMENT AND WRITTEN PERMISSION OF FORD RACING PERFORMANCE PARTS



### PARTS IN KIT:

Quantity	Part Name
1	Splitter Bumper Bracket
2	Bumper Bolt
4	Nut
16	J-Nut

### PARTS PROVIDED IN SPLITTER KIT M-16601P-MB:

Quantity	Part Name
1	Splitter
2	Splitter support rod assembly
20	M8 X 25mm bolt
4	J-Nut

**Techline (800) FORD788**

Factory Ford shop manuals are available from Helm Publications, 1-800-782-4356



## 2010-12 Mustang GT Splitter Bracket Kit M-17A626-MB INSTALLATION INSTRUCTIONS

NO PART OF THIS DOCUMENT MAY BE REPRODUCED WITHOUT PRIOR AGREEMENT AND WRITTEN PERMISSION OF FORD RACING PERFORMANCE PARTS

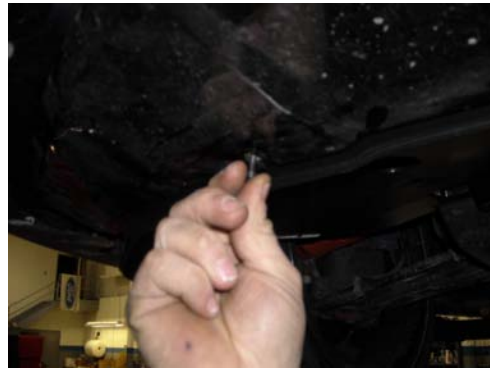
### **INSTALLATION INSTRUCTIONS:**

**STEP 1:** Support the vehicle to gain access to the under carriage.

**STEP 2:** Remove the front wheels.



**STEP 3:** Remove the (2) outer and (4) center bolts holding the splash guard to the fascia.



**Techline (800) FORD788**

Factory Ford shop manuals are available from Helm Publications, 1-800-782-4356

## 2010-12 Mustang GT Splitter Bracket Kit M-17A626-MB INSTALLATION INSTRUCTIONS

NO PART OF THIS DOCUMENT MAY BE REPRODUCED WITHOUT PRIOR AGREEMENT AND WRITTEN PERMISSION OF FORD RACING PERFORMANCE PARTS

**STEP 4:** Remove (2) front side inner fender liner bolts per side.



**STEP 5:** Remove (2) upper fascia bolts and (4) grill retaining clips.



**STEP 6:** Unclip the ambient air temperature sensor in the lower grille from fascia.



**Techline (800) FORD788**

Factory Ford shop manuals are available from Helm Publications, 1-800-782-4356

## 2010-12 Mustang GT Splitter Bracket Kit M-17A626-MB INSTALLATION INSTRUCTIONS

NO PART OF THIS DOCUMENT MAY BE REPRODUCED WITHOUT PRIOR AGREEMENT AND WRITTEN PERMISSION OF FORD RACING PERFORMANCE PARTS

**STEP 7:** Unclip both drivers and passenger sides of fascia and slightly pull away from vehicle.



**STEP 8:** Disconnect both running lamp and fog light electrical connectors.



**STEP 9:** Remove the front fascia from the vehicle by sliding forward.



**Techline (800) FORD788**

Factory Ford shop manuals are available from Helm Publications, 1-800-782-4356



## 2010-12 Mustang GT Splitter Bracket Kit M-17A626-MB INSTALLATION INSTRUCTIONS

NO PART OF THIS DOCUMENT MAY BE REPRODUCED WITHOUT PRIOR AGREEMENT AND WRITTEN PERMISSION OF FORD RACING PERFORMANCE PARTS

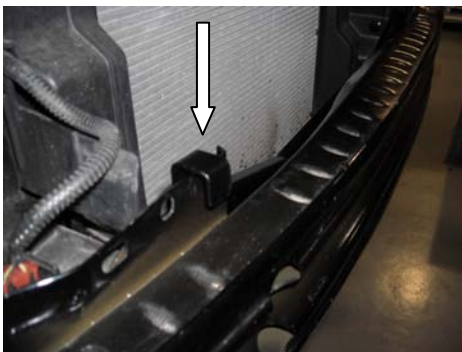
**STEP 10:** Remove bumper foam retaining clips and bumper foam.



**STEP 11:** Remove the (2) upper bumper bolts.



**STEP 12:** Install the new splitter bracket over bumper and slide onto lower (2) bumper bolts.



**Techline (800) FORD788**

Factory Ford shop manuals are available from Helm Publications, 1-800-782-4356

## 2010-12 Mustang GT Splitter Bracket Kit M-17A626-MB INSTALLATION INSTRUCTIONS

NO PART OF THIS DOCUMENT MAY BE REPRODUCED WITHOUT PRIOR AGREEMENT AND WRITTEN PERMISSION OF FORD RACING PERFORMANCE PARTS

**STEP 13:** Install the (2) supplied longer upper bumper bolts and torque to 18 ft.-lb.



**STEP 14:** Install (4) nuts on rear side of bumper bolts and tighten down onto the splitter bracket to 18 ft.-lb.



**STEP 15:** Reinstall the bumper foam.



**Techline (800) FORD788**

Factory Ford shop manuals are available from Helm Publications, 1-800-782-4356

## 2010-12 Mustang GT Splitter Bracket Kit M-17A626-MB INSTALLATION INSTRUCTIONS

NO PART OF THIS DOCUMENT MAY BE REPRODUCED WITHOUT PRIOR AGREEMENT AND WRITTEN PERMISSION OF FORD RACING PERFORMANCE PARTS

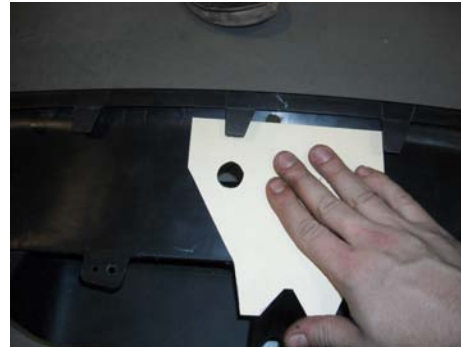
**STEP 16:** Remove (1) bolt and (1) retaining clip each side on the lower grill insert.



**STEP 17:** Gently unclip lower grill insert from fascia and remove by sliding forward.



**STEP 18:** Place templates on top side of lower grill insert and transfer hole locations.



**Techline (800) FORD788**

Factory Ford shop manuals are available from Helm Publications, 1-800-782-4356



## 2010-12 Mustang GT Splitter Bracket Kit M-17A626-MB INSTALLATION INSTRUCTIONS

NO PART OF THIS DOCUMENT MAY BE REPRODUCED WITHOUT PRIOR AGREEMENT AND WRITTEN PERMISSION OF FORD RACING PERFORMANCE PARTS

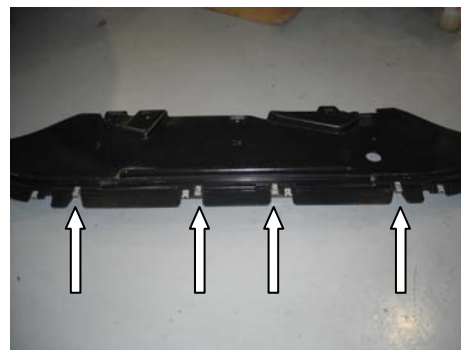
**STEP 19:** Drill (2) 1.00" holes at the marked locations from the top side down and de-bur the holes.



**STEP 20:** Remove the (4) bottom clips on the leading forward edge of the splash guard.



**STEP 21:** Replace the removed clips with the (4) J-Nuts provided in Splitter Kit M-16601P-MB.



**Techline (800) FORD788**

Factory Ford shop manuals are available from Helm Publications, 1-800-782-4356

## 2010-12 Mustang GT Splitter Bracket Kit M-17A626-MB INSTALLATION INSTRUCTIONS

NO PART OF THIS DOCUMENT MAY BE REPRODUCED WITHOUT PRIOR AGREEMENT AND WRITTEN PERMISSION OF FORD RACING PERFORMANCE PARTS

**STEP 22:** Reference steps 5-9 and reinstall the front fascia onto vehicle.



**STEP 23:** Slide the lower grill insert into fascia and clip into place.



**STEP 24:** Reference steps 3, 4 and 16 to reattach the lower grill insert hardware and inner fender liners.

**Techline (800) FORD788**

Factory Ford shop manuals are available from Helm Publications, 1-800-782-4356

NO PART OF THIS DOCUMENT MAY BE REPRODUCED WITHOUT PRIOR AGREEMENT AND WRITTEN PERMISSION OF FORD RACING PERFORMANCE PARTS

**STEP 25:** Clip the ambient air temp into the lower grill insert.



**STEP 26:** The lower grill insert has (8) locations on leading edge for additional clips as highlighted below.



**STEP 27:** Slide the provided J-Nuts onto the (8) locations and transfer the locations for the new holes.



**Techline (800) FORD788**

Factory Ford shop manuals are available from Helm Publications, 1-800-782-4356



## 2010-12 Mustang GT Splitter Bracket Kit M-17A626-MB INSTALLATION INSTRUCTIONS

NO PART OF THIS DOCUMENT MAY BE REPRODUCED WITHOUT PRIOR AGREEMENT AND WRITTEN PERMISSION OF FORD RACING PERFORMANCE PARTS

**STEP 28:** Remove the J-Nuts and drill a 3/8" diameter hole in the (8) locations.



**STEP 29:** Install (8) J-Nuts in the newly created locations.

**STEP 30:** Test fit the Splitter Kit M-16601P-MB on the vehicle by installing the (8) bolts on leading edge and (4) bolts on trailing edge.

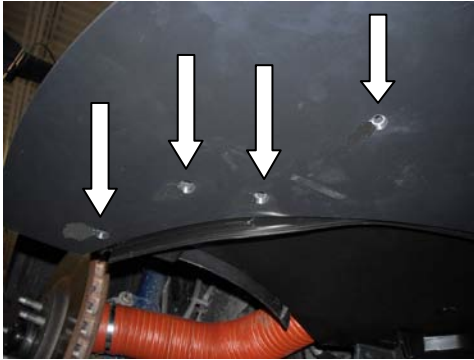


**Techline (800) FORD788**

Factory Ford shop manuals are available from Helm Publications, 1-800-782-4356

NO PART OF THIS DOCUMENT MAY BE REPRODUCED WITHOUT PRIOR AGREEMENT AND WRITTEN PERMISSION OF FORD RACING PERFORMANCE PARTS

**STEP 31:** With Splitter Kit M-16601P-MB in place, transfer the remaining (8) holes through the splitter onto grill insert.



**STEP 32:** Remove the splitter and drill the (8) remaining holes 3/8" diameter through the lower grill insert.



**STEP 33:** Install the (8) remaining J-Nuts in the new locations.



**Techline (800) FORD788**

Factory Ford shop manuals are available from Helm Publications, 1-800-782-4356



## 2010-12 Mustang GT Splitter Bracket Kit M-17A626-MB INSTALLATION INSTRUCTIONS

NO PART OF THIS DOCUMENT MAY BE REPRODUCED WITHOUT PRIOR AGREEMENT AND WRITTEN PERMISSION OF FORD RACING PERFORMANCE PARTS

**STEP 34:** Install Splitter Kit M-16601P-MB by loosely installing the splitter with the provided (20) fasteners; torque each fastener to 28 in.-lb. beginning with center-most fastener and working outward on both sides.



**STEP 35:** Install the upper splitter rod end through the lower grill insert and thread into bumper bracket.



**STEP 36:** Install the splitter support rods onto rod ends; torque bolts through splitter to 28 in.-lb.



**Techline (800) FORD788**

Factory Ford shop manuals are available from Helm Publications, 1-800-782-4356



## 2010-12 Mustang GT Splitter Bracket Kit M-17A626-MB INSTALLATION INSTRUCTIONS

NO PART OF THIS DOCUMENT MAY BE REPRODUCED WITHOUT PRIOR AGREEMENT AND WRITTEN PERMISSION OF FORD RACING PERFORMANCE PARTS

**STEP 37:** Lower vehicle back to ground. With vehicle at factory ride height, adjust the splitter support rods so the splitter is level and tighten jam nuts.



**STEP 38:** Install the front wheels and torque to 98 ft.-lb.



**Techline (800) FORD788**

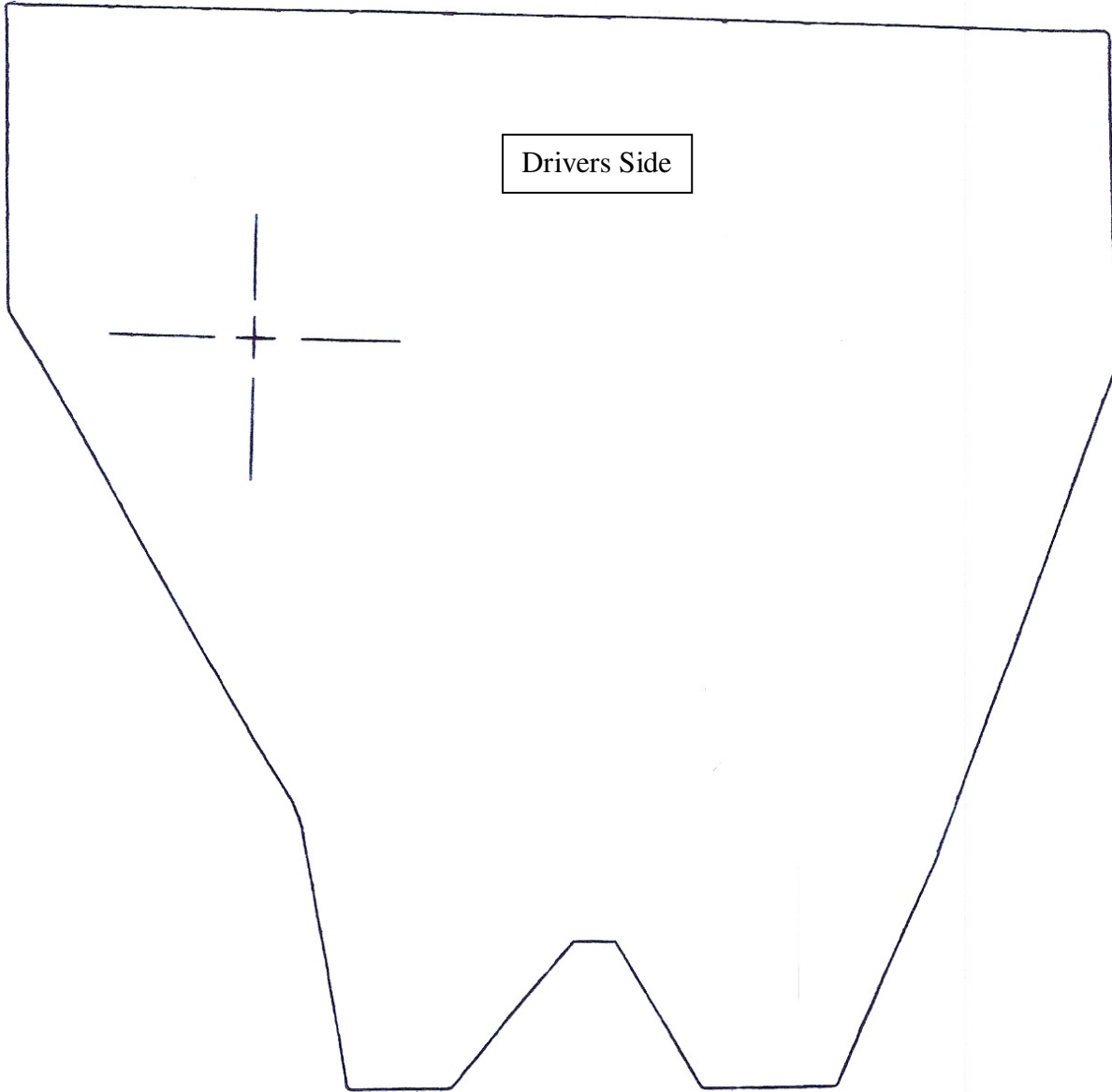
Factory Ford shop manuals are available from Helm Publications, 1-800-782-4356



**2010-12 Mustang GT Splitter Bracket Kit  
M-17A626-MB  
INSTALLATION INSTRUCTIONS**

NO PART OF THIS DOCUMENT MAY BE REPRODUCED WITHOUT PRIOR AGREEMENT AND WRITTEN PERMISSION OF FORD RACING PERFORMANCE PARTS

**NOTE: Flip template over to use on passenger side of vehicle.**



**Techline (800) FORD788**

Factory Ford shop manuals are available from Helm Publications, 1-800-782-4356