



## 2013 Mustang Chin Splitter

P/N: 421391 (R1313-17F775-AA)

Application: 2013 Ford Mustang

2013 Mustang 5.0L with Automatic/Manual Transmission

2013 Mustang 3.7L with Automatic/Manual Transmission

### Installation Instructions



Before installing your ROUSH Performance Product(s), read through the entire installation procedure and check to make sure all items are present. Contact ROUSH Customer Service at 1-800-59-ROUSH, weekdays from 9:00 AM to 5:00 PM EST, with any questions regarding fit, missing parts or instructions that are unclear to you.



**ROUSH**<sup>®</sup>  
P E R F O R M A N C E

Description	Part Number	Qty
<b>2013 Mustang Chin Splitter Kit</b>	<b>R1313-17F775</b>	<b>1</b>
Chin Splitter	1313-17F775	1
Chin Splitter Installation Manual	1313-17F775IM	1
<b>Chin Splitter Hardware Kit</b>	<b>1313-17F775HK-AA</b>	<b>1</b>
J-Clip, M4.2	W704823-S439	20
Screw, 4.2 X 19 PC PZ	W715060-S439	14

### **EQUIPMENT AND SUPPLIES REQUIRED**

- Pneumatic Saw
- 7mm Metric Socket (Deep Recommended)
- 8mm Metric Socket (Deep Recommended)
- Drill
- 1/8in Drill Bit
- 1/4in Drill Bit
- Ratchet
- Torque Wrench
- Utility knife
- Trim Tool
- Tape Measure
- Deburring Tool
- Safety Glasses



## **LIMIT OF LIABILITY STATEMENT**

The information contained in this publication was accurate and in effect at the time the publication was approved for printing and is subject to change without notice or liability. ROUSH Performance Products (RPP) reserves the right to revise the information presented herein or to discontinue the production of parts described at any time.

## **SAFETY REQUIREMENTS**

**STOP! READ IMPORTANT SAFETY CAUTIONS AND WARNINGS BEFORE PROCEEDING.**

### **IMPORTANT SAFETY NOTICE**

Appropriate disassembly, assembly methods and procedures are essential to ensure the personal safety of the individual performing the kit installation. Improper installation due to the failure to correctly follow these instructions could cause personal injury or death. Read each step of the installation manual carefully before starting the actual installation.

1. Always wear safety glasses for eye protection.
2. Place ignition switch in the OFF position.
3. Always apply the parking brake when working on a vehicle.
4. Chock the front and rear tires to prevent unexpected vehicle movement.
5. If working without a lift, always consult vehicle manual for correct lifting specifications.
6. Operate the engine only in well-ventilated areas to avoid exposure to carbon monoxide.
7. Do not smoke or use flammable items near or around the fuel system.
8. Use chemicals and cleaners in well-ventilated areas.
9. Batteries produce explosive gases, which can cause personal injury. Therefore, do not allow flames, sparks or flammable substances to come near the battery.
10. Keeps hands and any other objects away from the radiator fan blades.
11. Keep yourself and your clothing away from moving parts when the engine is running.
12. Do not wear loose clothing or jewelry that can get caught in rotating parts or scratch surface finishes.
13. Allow the engine, cooling system, brakes and exhaust to cool before working on a vehicle.

### **WORK SAFELY!**

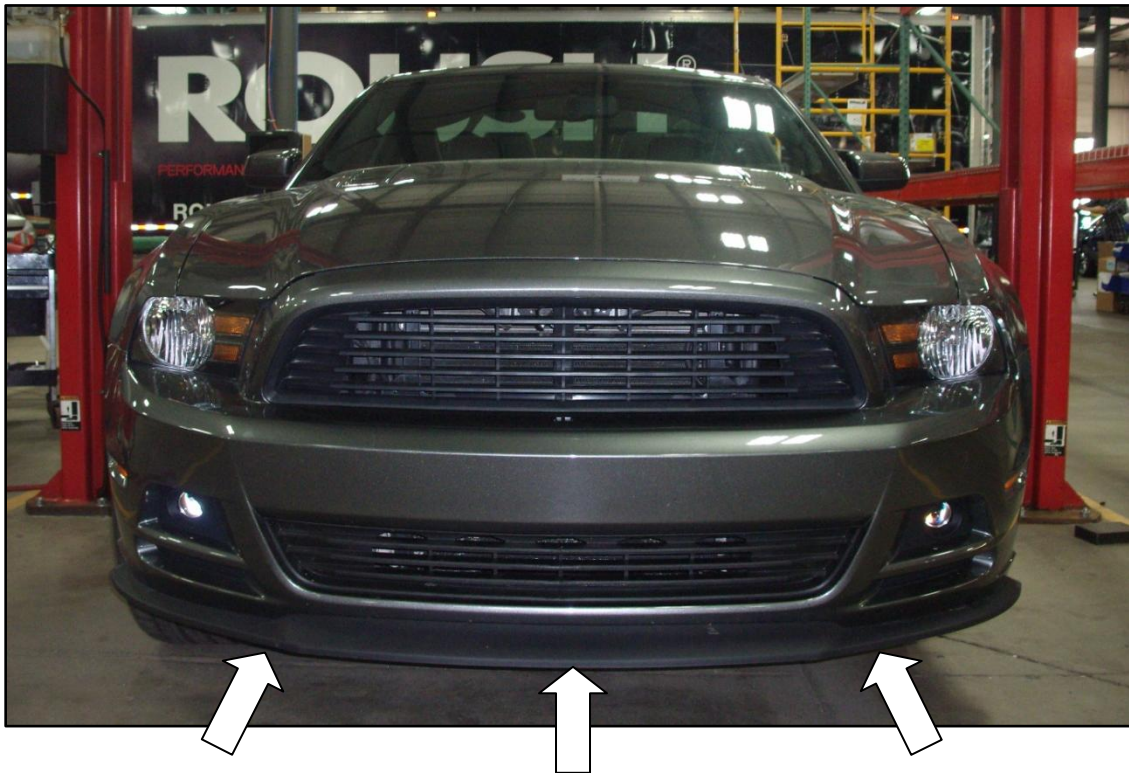
Perform this installation on a good clean level surface for maximum safety and with the engine turned off.



## SECTION A – Removal

The following section will guide you through the removal of the factory chin splitter.

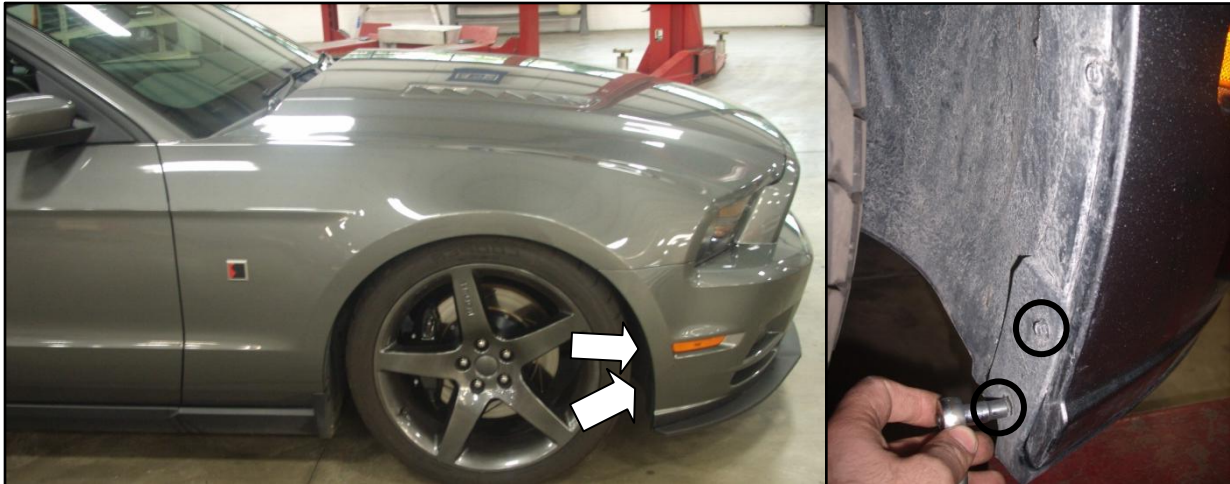
1. Following proper automotive industry safety standards, lift the vehicle on a vehicle hoist or hydraulic jack to gain access to the underside of the front bumper.



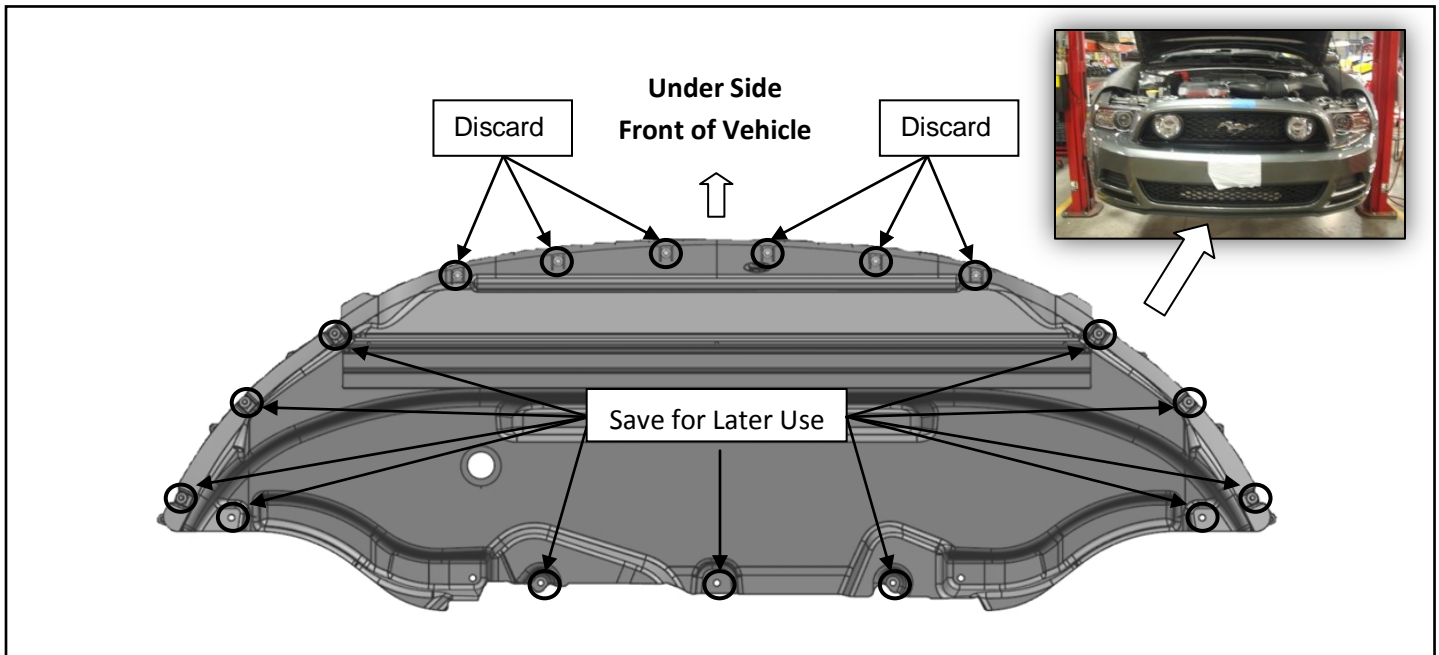
(Arrows indicate the area to be accessed)



2. With the vehicle properly supported, turn the wheel to the left to gain access to the two (2) 7mm hex fasteners on the passenger side of the vehicle. Remove the two (2) fasteners and repeat on the driver side of the vehicle.

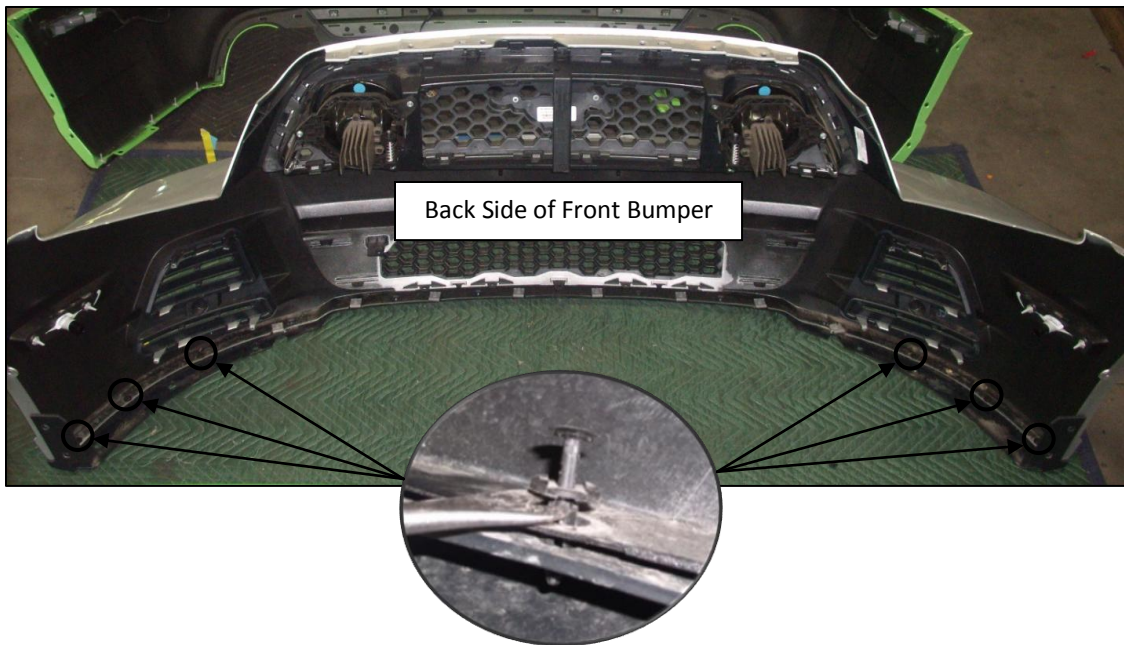


3. With the vehicle properly supported, access the underside of the engine bay. With an 8mm socket and ratchet, remove the front six (6) closeout panel fasteners and discard. Remove the remaining eleven (11) 7mm closeout panel fasteners and save for reinstallation. Remove the closeout panel.

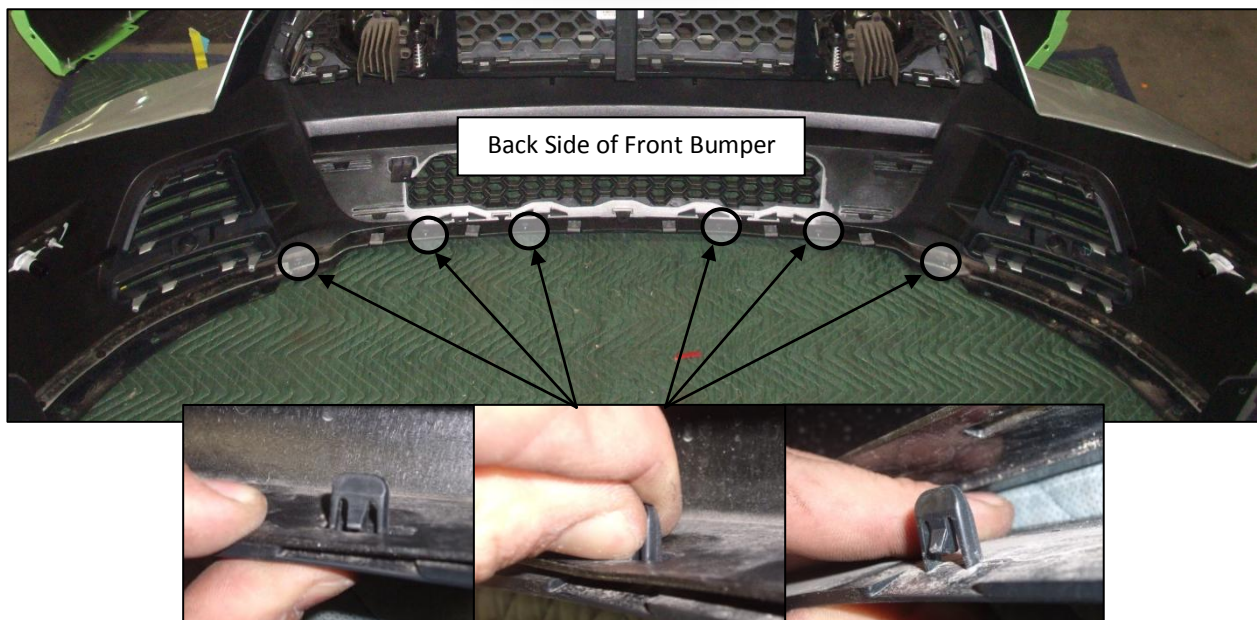


4. With a suitable trim tool remove and discard the six (6) trim pins from the inside of the lower fascia as shown below.

(Bumper removed for clarity)

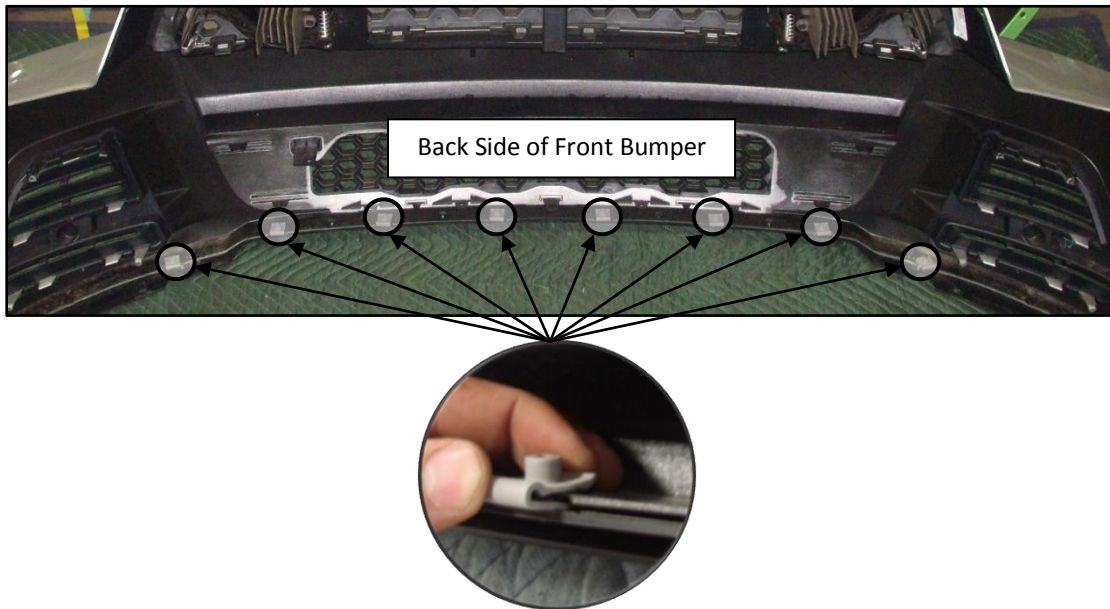


5. Depress the six (6) tabs protruding through the slots in the lower area to remove the factory splitter.





6. Remove and discard the eight (8) factory plastic U-Clips from the lower portion of the fascia.

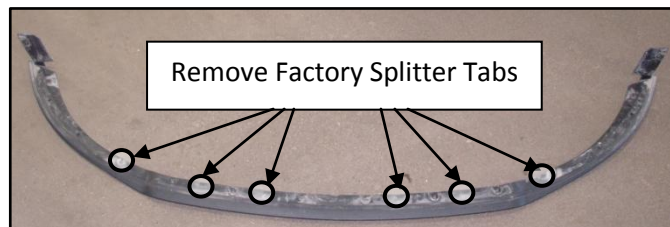


## SECTION B – MODIFICATION

The following section will guide you through the modification of the factory chin splitter.

1. Using a utility knife or razor blade, cut the six (6) tabs off so they are flush with the factory splitter.

**WARNING:** TO PREVENT INJURY, USE CAUTION WHEN USING ANY CUTTING TOOLS.



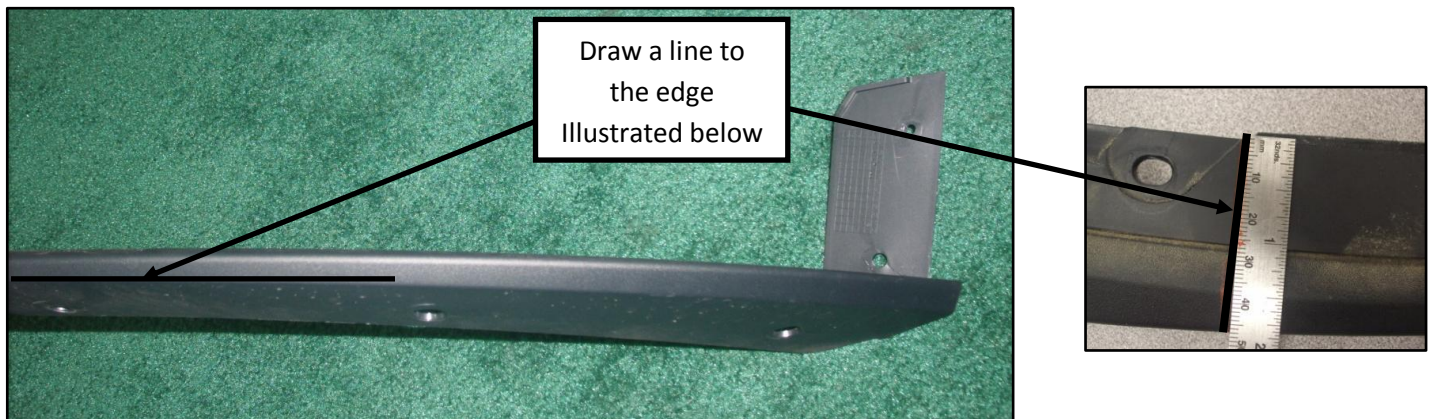




2. Measuring from the left hand side end of the splitter, measure inward 47cm (18.5 in) and mark the splitter at this location.



3. At the marked location, with the end of a straight edge flush against the back edge of the splitter, draw a straight line continuing around the splitter to the lowest body line as demonstrated in the pictures below.

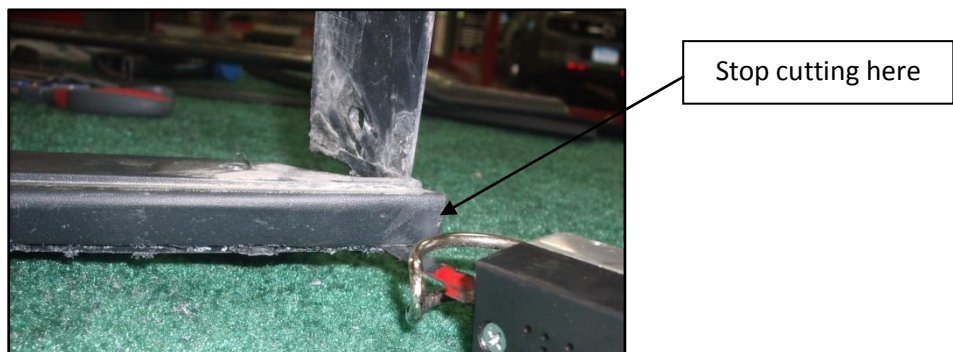
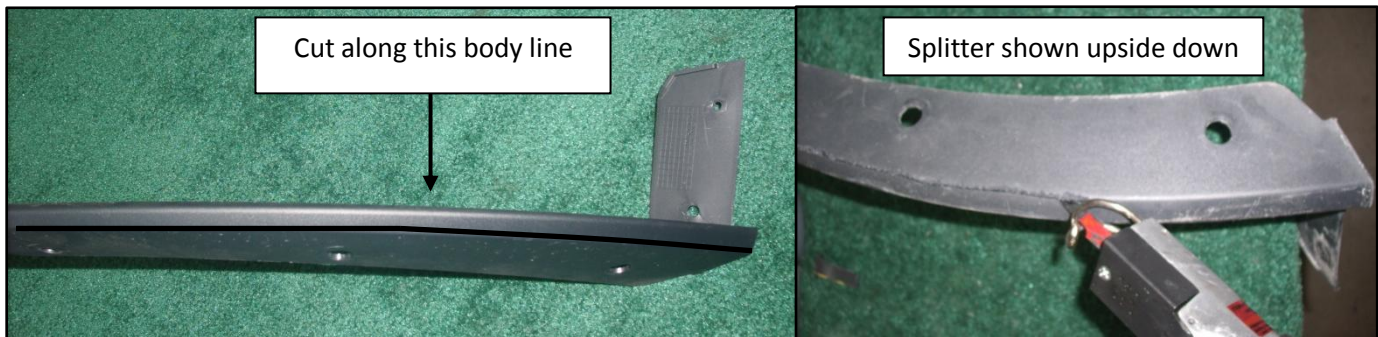




- Using a pneumatic saw, cut along the line drawn in step 3. DO NOT CUT below the parting line illustrated in step 3.

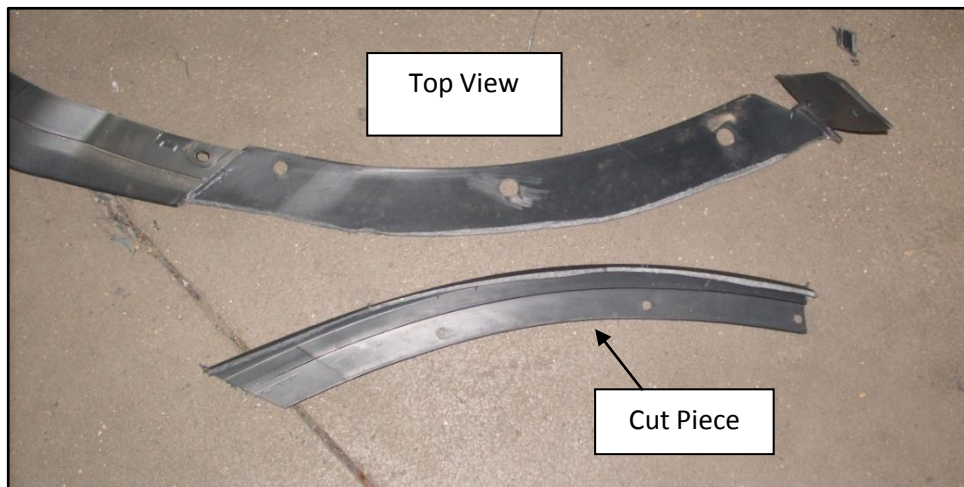
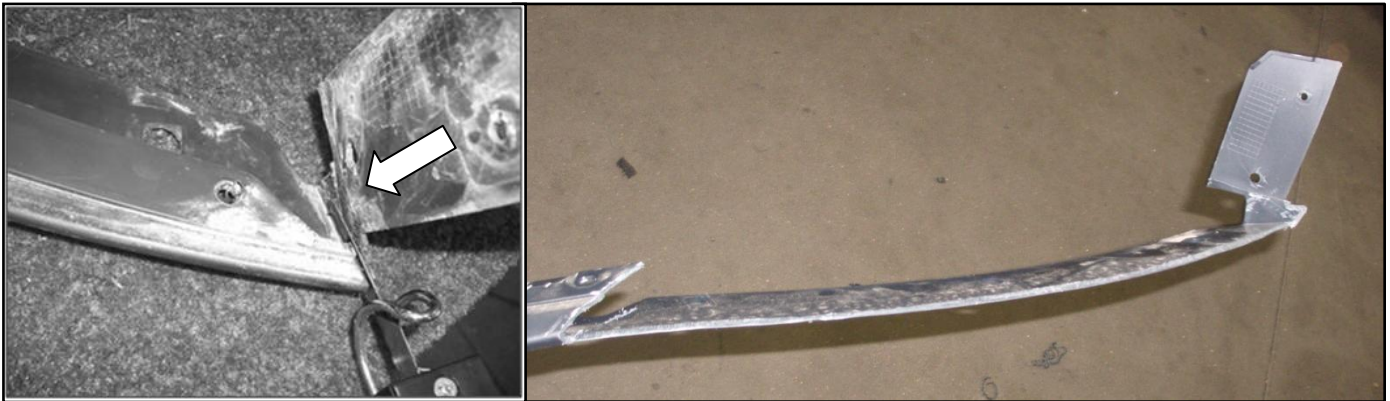


- Using a pneumatic saw, cut along the lower body line as illustrated. Stop at the edge to retain the turned up mounting feature.





6. Cut downward, flush against the retaining feature to finish the cut. Discard the cut piece.





7. With a suitable deburring tool, remove the excess rough plastic on the cut edges of the factory splitter.



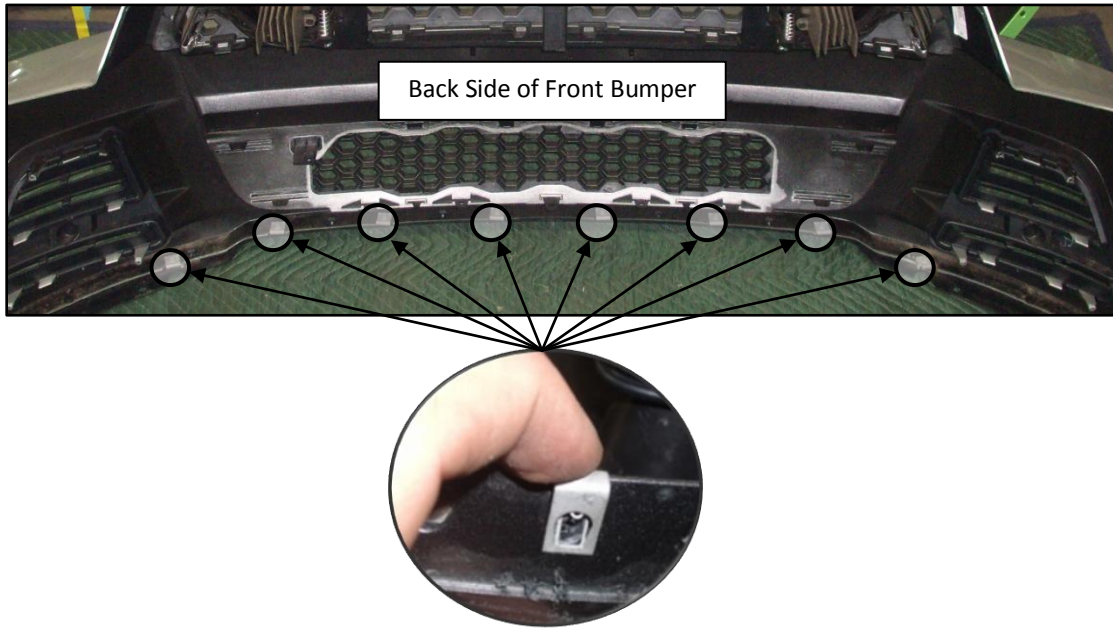
8. Repeat steps 2 through 7 for the right hand side of the splitter. Discard the 2 cut off pieces.





9. Install the eight (8) J-Clips (W704823-S439) found in the hardware kit (1313-17F775HK) in the locations shown below.

(Bumper Removed for Clarity)





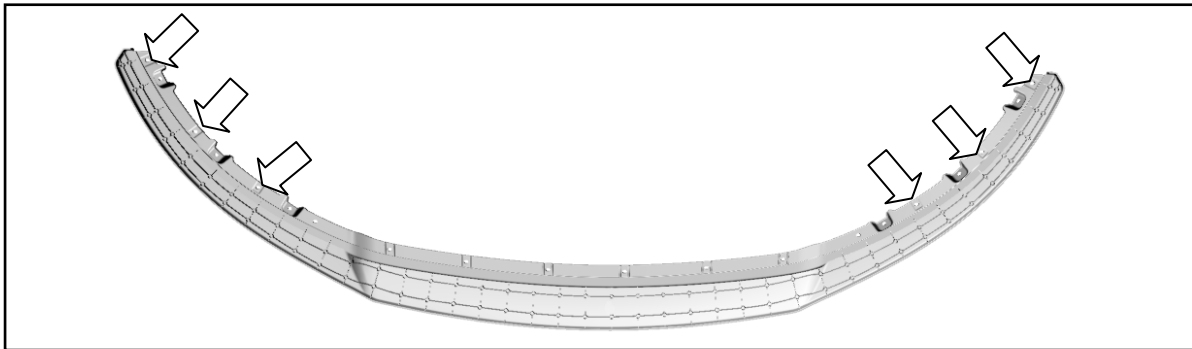
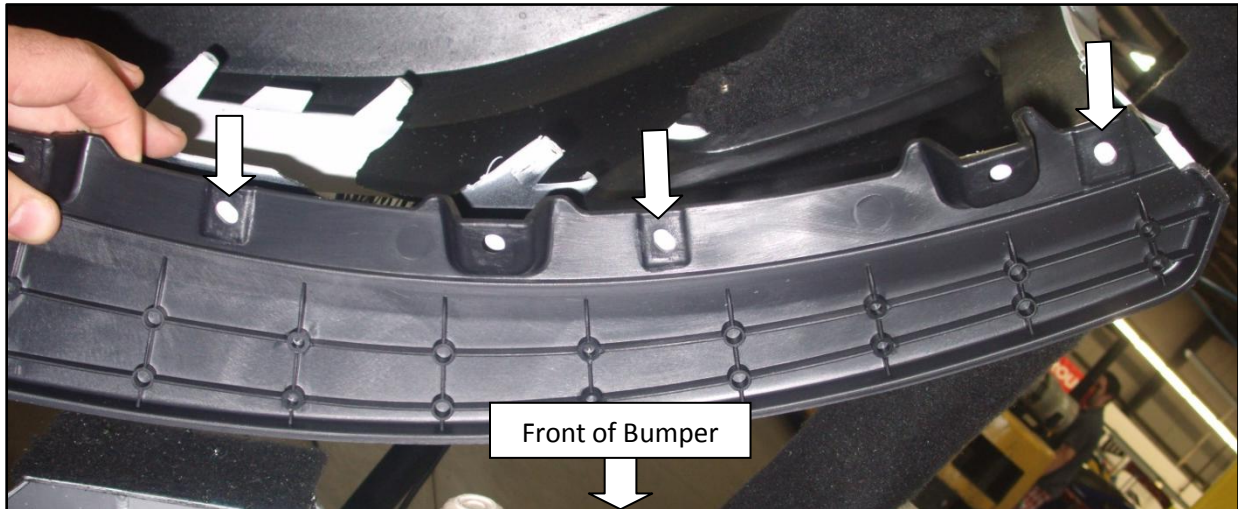
10. The new chin splitter will be used as a template for the mounting hole locations. Temporarily install the new chin splitter (1313-17F775) on the front fascia. Install three (3) screws (W715060-S439) found in the hardware kit (1313-17F775HK) in the locations shown. Set the left and right ends of the splitter at an equal distance from the sides of the fascia. Align the front of the fascia with the chin splitter.

(Bumper Removed for Clarity. Bumper Shown Face Down)

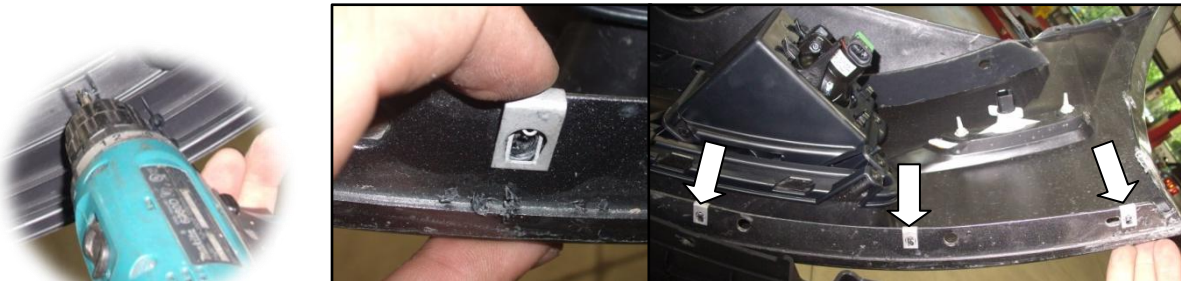




11. Using the new splitter as a guide, mark the three (3) holes on the right hand side to be drilled. Repeat with the left hand side (Total left and right six (6) holes). Remove the three (3) screws installed in step 10 and remove the splitter.

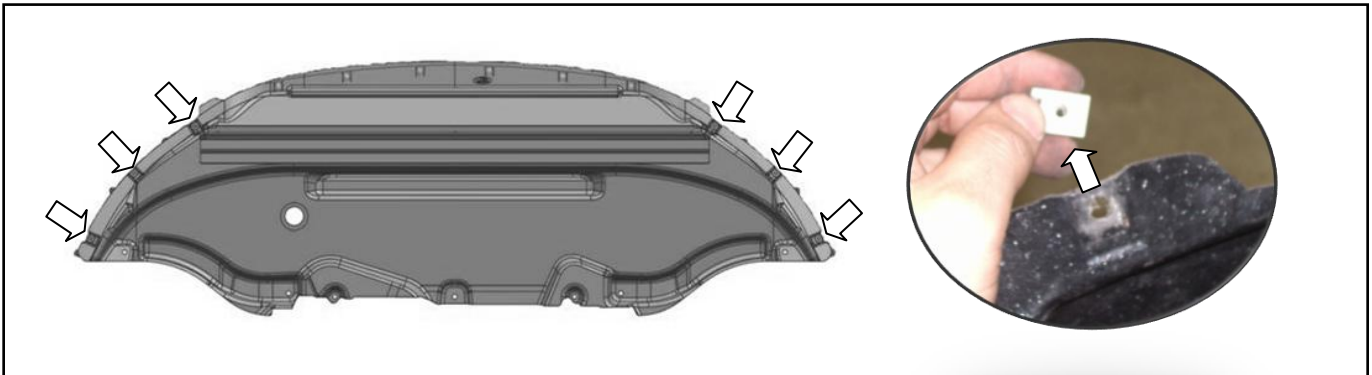


12. With a suitable drill and a 1/8 IN drill bit, drill the six (6) marked holes. With a 1/4 IN drill bit, drill the six (6) pilot holes open to 1/4 IN. Install six (6) J-Clips (W704823-S439) from the hardware kit onto the six (6) newly drilled holes (right side shown below, left side similar).





13. Remove and discard the six (6) factory J-Clips from the lower closeout panel.





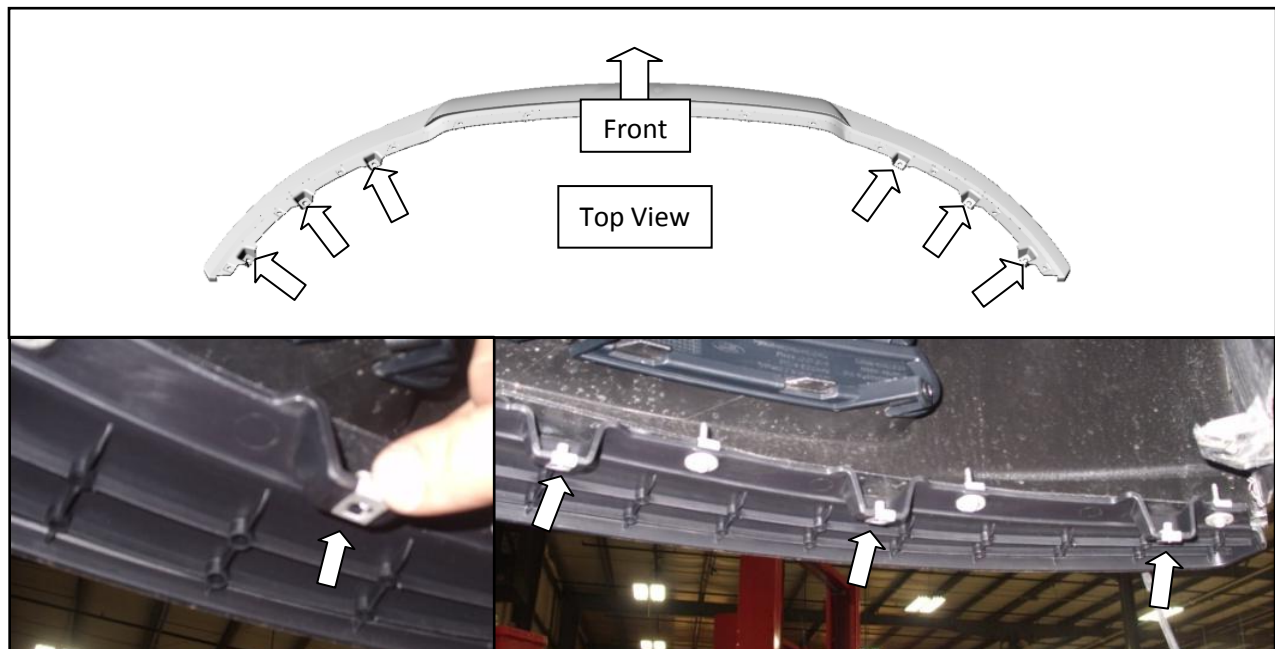
## SECTION C – Installation

The following section will guide you through the installation of the Roush front chin splitter.

1. Install the new chin splitter (1313-17F775) using six (6) screws (W715060-S439) found in the hardware kit into the six (6) J-Clips installed in step 12, Section B. Right side shown below; left side similar. Torque to 5 Nm (44 lb-in).

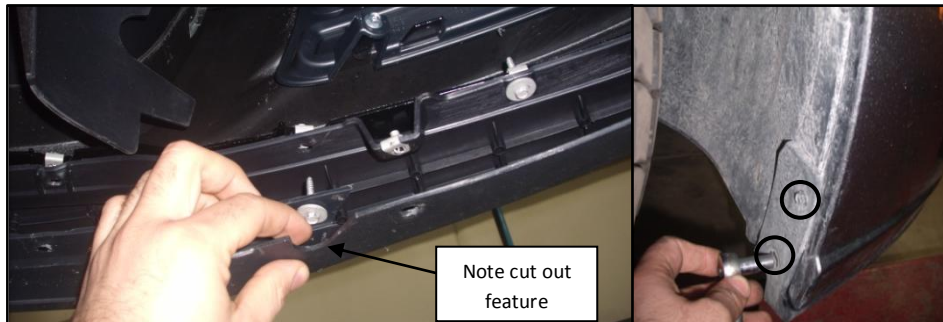


2. Install the remaining six (6) J-Clips (W704823-S439) found in the hardware kit onto the new splitter in the areas shown below.

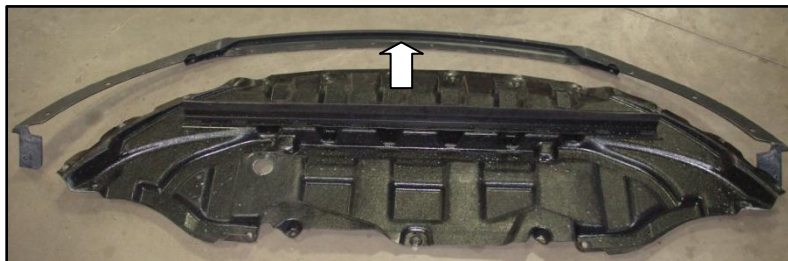




3. Install the factory splitter onto the vehicle. Install one (1) screw (W715060-S439), in the location shown in the left picture below. Install the two (2) take off screws removed in step 2, Section A into the wheel well area as shown in the right picture below. Right side shown; left side similar. Torque to 5 Nm (44 lb-in).

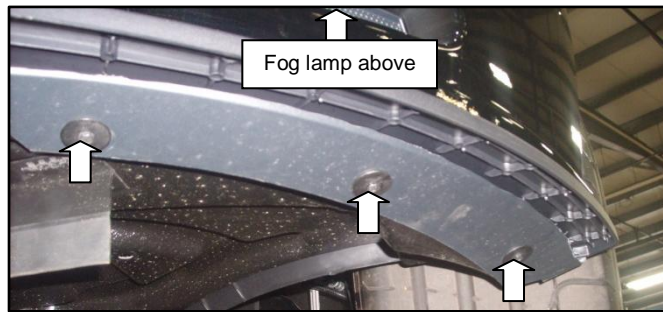


4. Install the closeout panel. The lower closeout panel must be positioned between the factory splitter and the new chin splitter.  
(Closeout Panel Removed for Clarity)

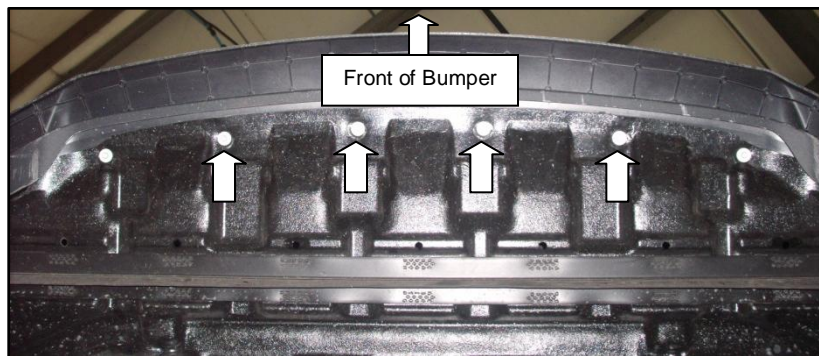




5. Install six (6) of the 7mm take off screws from step 3, Section A. Left hand side shown, right hand side similar. Torque to 5 Nm (44 lb-in).

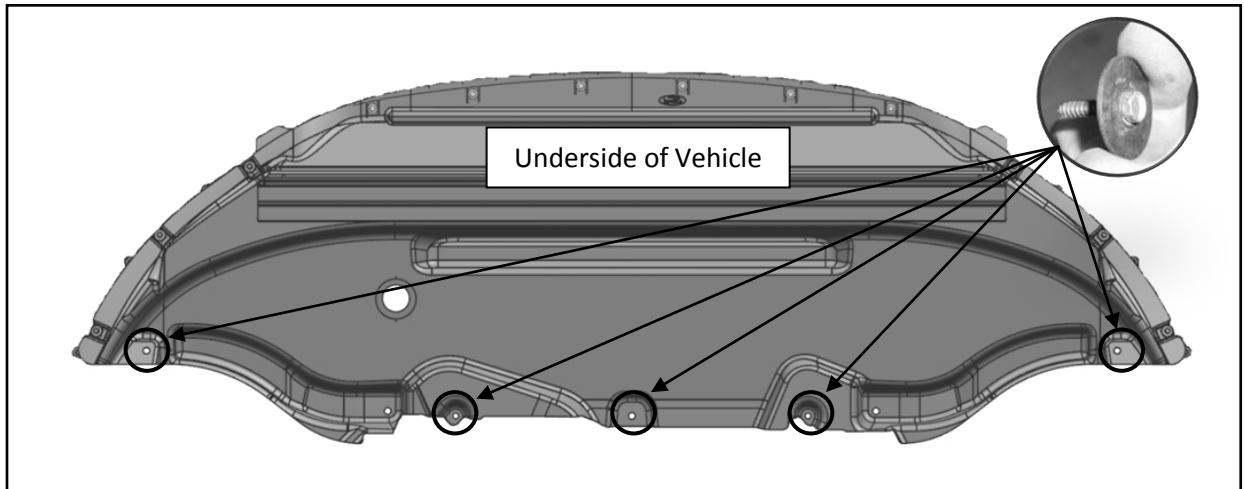


6. Install the remaining six (6) (W715060-S439) screws found in the hardware kit into the front portion of the closeout panel as illustrated below. Torque to 5 Nm (44 lb-in).





7. Install the remaining five (5) take off bolts into the closeout panel as illustrated below. Torque to 5 Nm (44 lb-in).





**Congratulations!!!** You have completed the installation of your new ROUSH Performance Products, 2013 Mustang Chin Splitter.





## WARRANTY

All retail parts carry a 90-day warranty from the date of purchase. This warranty covers defects in materials or workmanship, and does not include (i) normal wear and tear, environmental conditions, improper installation; (ii) road hazards, misuse, abuse, neglect, accidents, collision, fire, theft, freezing, vandalism, riot, explosion, or objects striking the vehicle; (iii) misusing the vehicle, such as driving over curbs, overloading, racing, or using the vehicle as a stationary power source; (iv) altering, disassembling or modifying the parts; (v) defects caused or induced by failures, breakdowns, or damage by other parts, components or the vehicle; (vi) subjecting the parts to excessive moisture or water or any motor vehicle fluids (e.g.: oil, anti-freeze, battery acid, brake fluid, etc.); (vii) acts of God, natural disasters and other similar causes beyond the reasonable control of ROUSH; or (viii) application of chemicals that affect the parts. This Limited Warranty does not cover surface deterioration of paint, trim, and appearance items that result from use and/or exposure to the elements, such as stone chips, scratches, bird droppings, lightning, hail, windstorm, dings, dents, earthquake, road salt, tree sap, water or flood.

ROUSH SHALL NOT BE LIABLE TO REIMBURSE CUSTOMER/DEALER FOR INCIDENTAL OR CONSEQUENTIAL DAMAGES RESULTING FROM THE INSTALLATION OR USE OF ANY PRODUCT SOLD THROUGH THIS CATALOG OR ARISING OUT OF ANY BREACH OF WARRANTY. EXCEPT AS MAY BE STATED IN THIS CATALOG, ROUSH DISCLAIMS ALL EXPRESS AND IMPLIED WARRANTIES, INCLUDING THE WARRANTIES OF MERCHANTABILITY AND FITNESS FOR A PARTICULAR PURPOSE. IN NO EVENT SHALL ROUSH'S LIABILITY EXCEED THE PRICE PAID BY CUSTOMER/DEALER FOR PRODUCTS SOLD REGARDLESS IF ROUSH HAS BEEN ADVISED IN ADVANCE OF ANY POTENTIAL PROBLEM OR IF A CLAIM IS BASED ON CONTRACT, TORT, STRICT LIABILITY, PRODUCT LIABILITY OR OTHERWISE. SOME STATES DO NOT ALLOW THE EXCLUSION OR LIMITATION OF IMPLIED WARRANTIES OR THEIR DURATION, OR LIABILITY FOR INCIDENTAL OR CONSEQUENTIAL DAMAGES, SO THE ABOVE EXCLUSIONS OR LIMITATIONS MAY NOT APPLY.