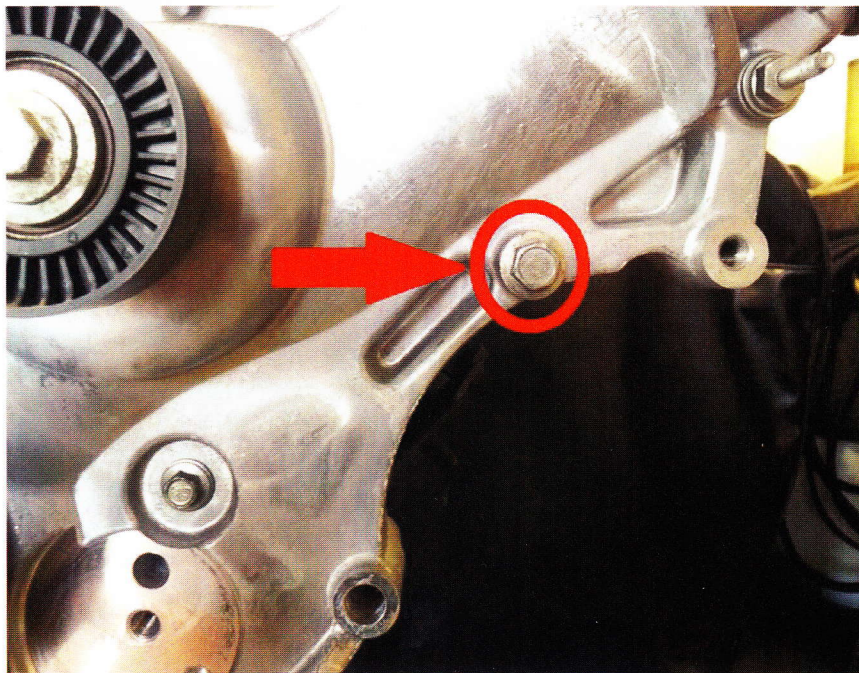




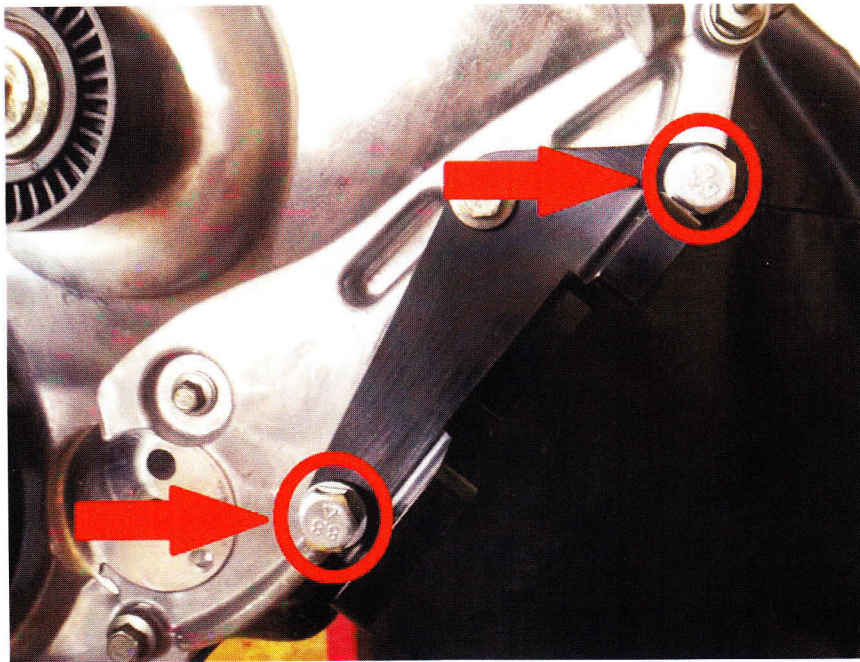
## Installation instructions for Coyote swap brackets PART # PBH-SWAP-KIT-1

### Installing the power steering bracket

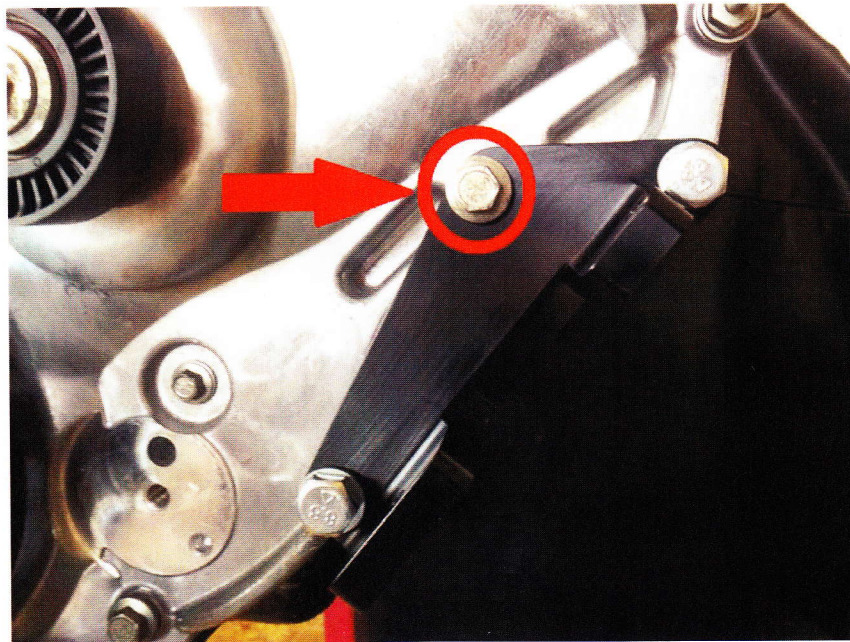
1. Remove the 8mm timing cover bolt located on the drivers side of the engine second from the bottom (Save this bolt as it will be re-installed).



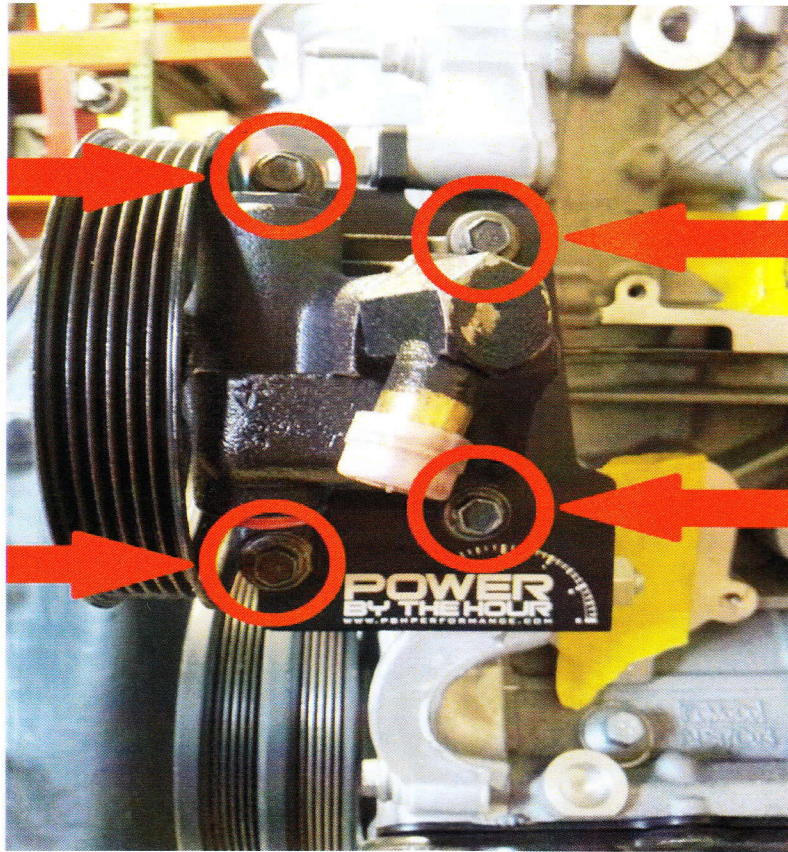
2. Install the power steering bracket using the hardware provided (1) 10mm x 20mm bolt with one 10mm washer in the top hole, (1) 12mm x 90mm bolt and 12mm nut in the bottom hole using a 12mm washer on each end of the bolt.



3. Re-install the 8mm bolt removed in step 1.



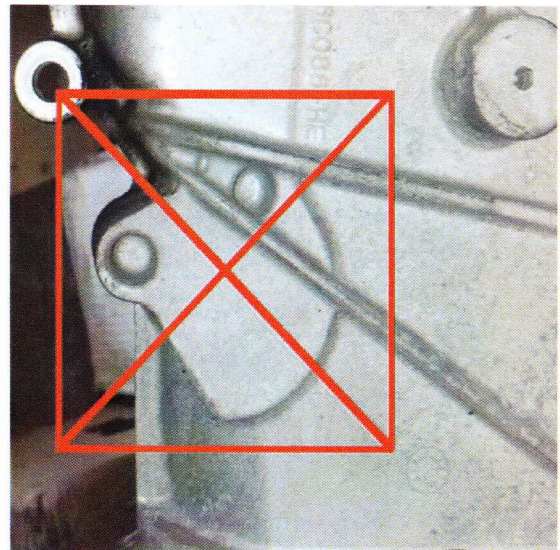
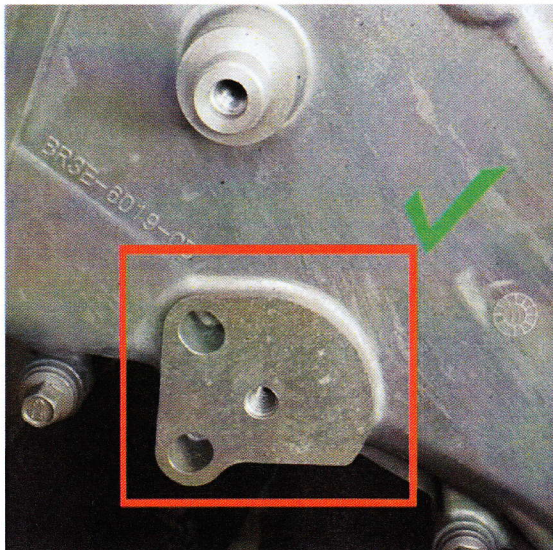
4. Now you can install the power steering pump using your (4) original mounting bolts.  
(If hardware is needed to mount the power steering pump. Use 8mm x 1.25 bolts  
55mm - 70mm long)



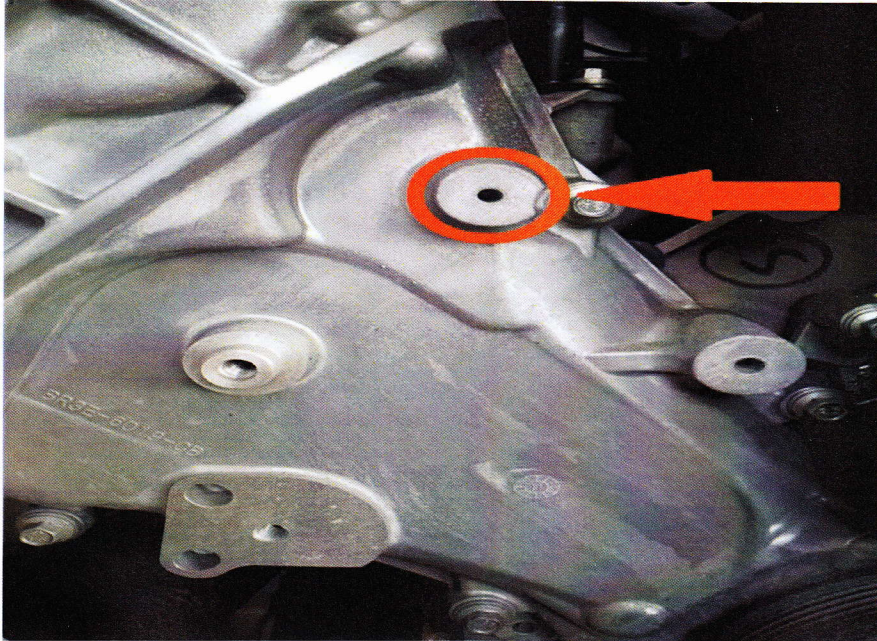
Note: A 1996-2001 GT/Cobra or 2002-2010 GT power steering pump should be used.

### Installing the alternator bracket

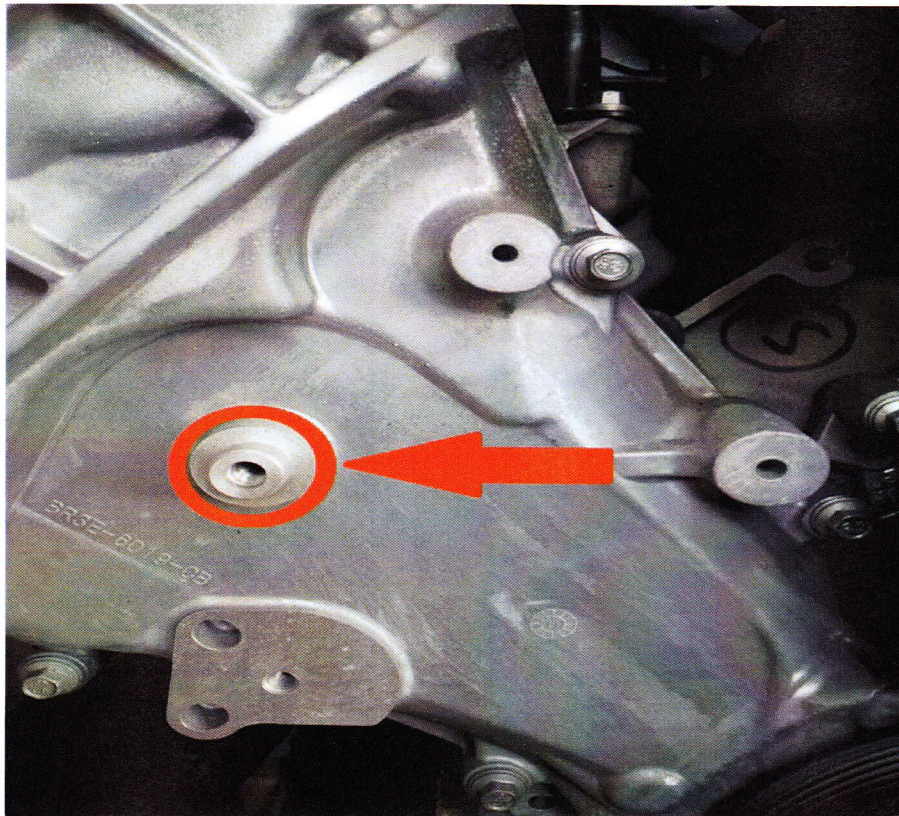
Note: There are two different timing covers used by Ford. You will need the newer version that has provisions for the A/C belt tensioner. If you need the newer style cover the Ford part number is BR3Z-6019-E.



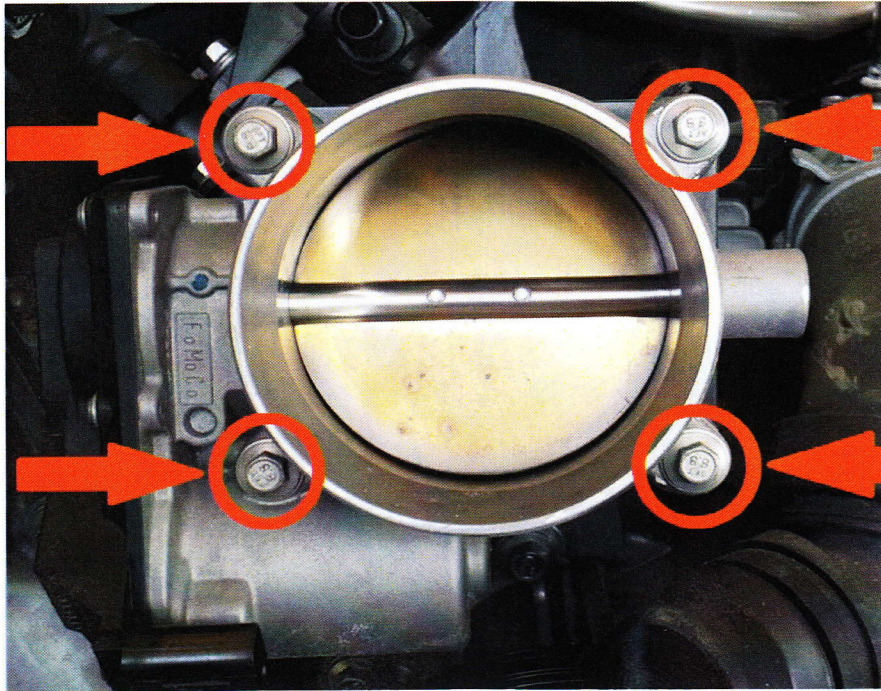
1. Drill and tap a hole into the stand-off located on the passenger side of the timing cover. Using a 17/64 drill bit drill a hole 1" deep. Then tap the hole with 8mm x 1.25. This hole will be used later to mount the alternator bracket.



2. Cut off the idler pulley stand-off located on the passenger side of the timing cover. Cut it off as close to the timing cover as possible. This is best done with a sawzall or cut-off wheel.

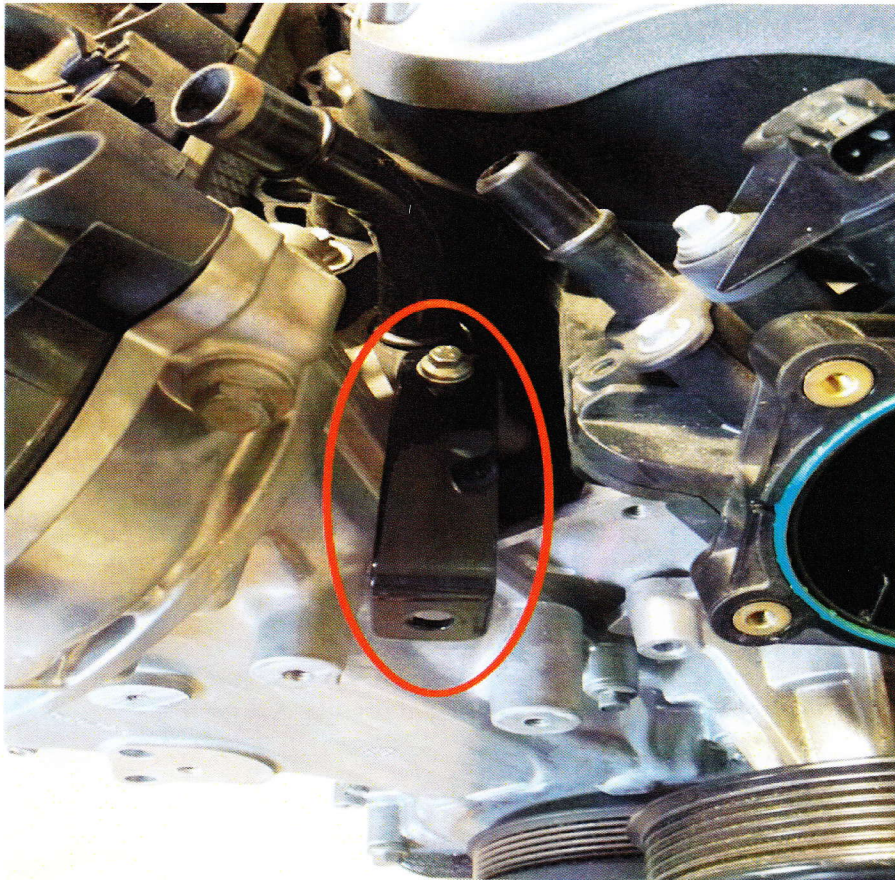


3. Remove the (4) 6mm bolts attaching the throttle body to intake (Discard these bolts as they will not be reused).

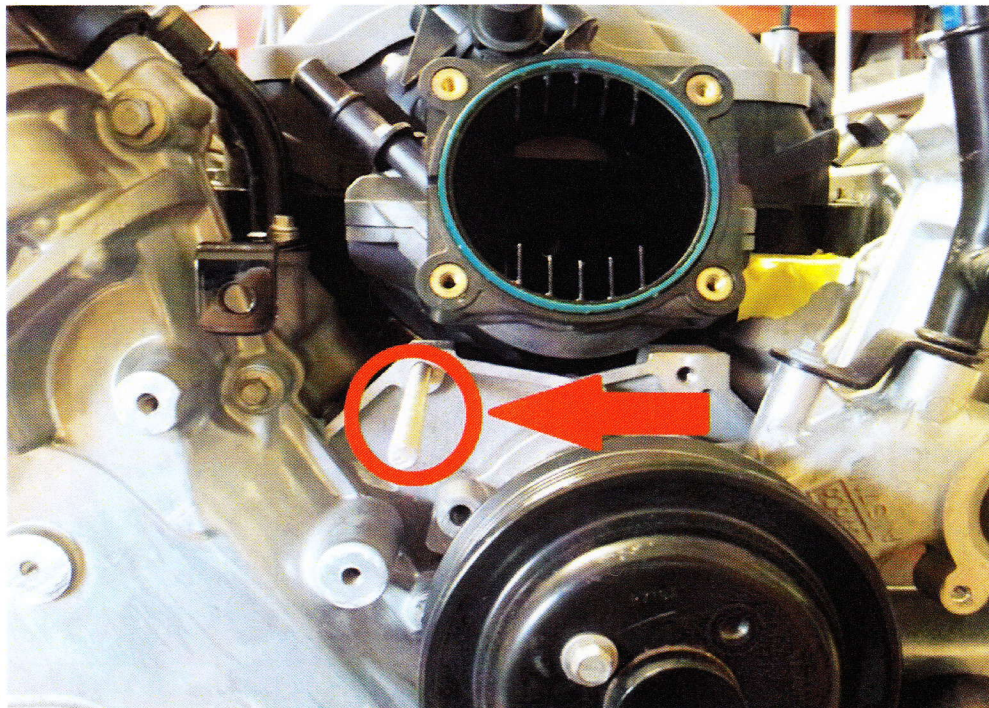


4. Remove the 6mm bolt holding the passenger side heater tube to head. Install "L" bracket with the "L" facing down and the long end bolted to heater tube re-install 6mm bolt (do not tighten yet).

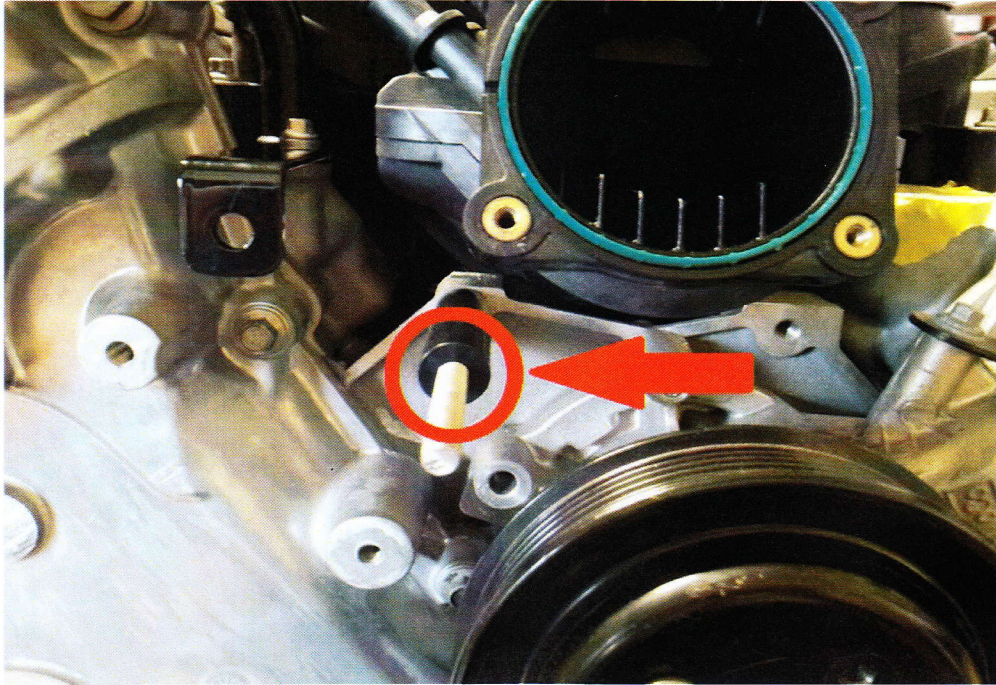




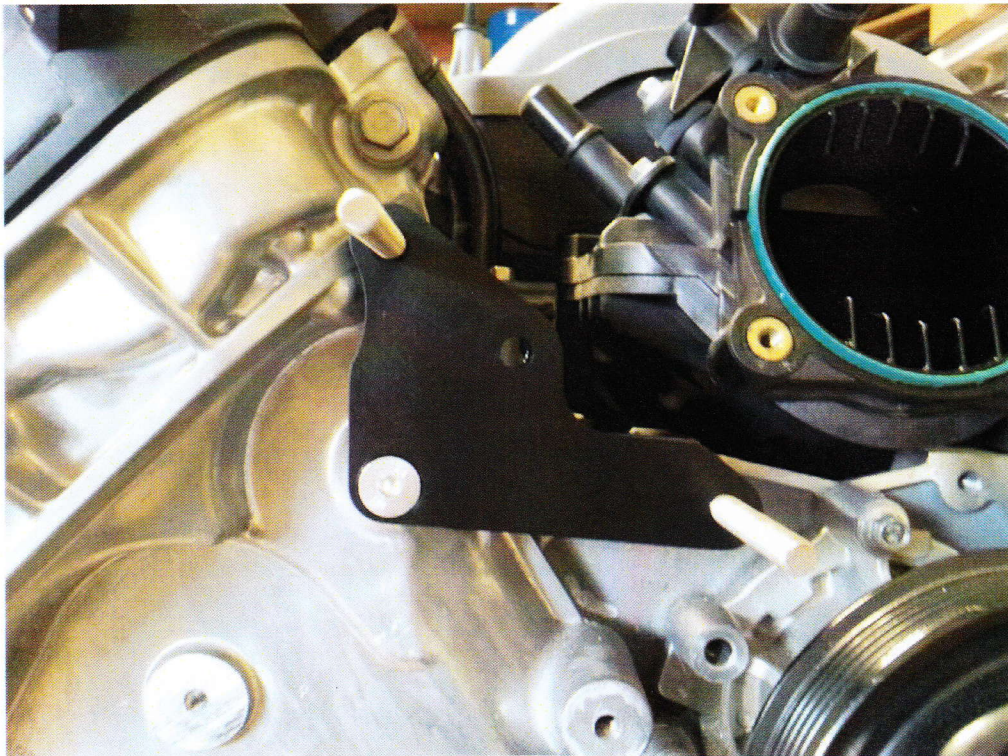
5. Install the 8mm x 6.250" threaded rod into the hole located on the engine block just above and to the left of the water pump. Thread the rod in about 1/2" and stop.



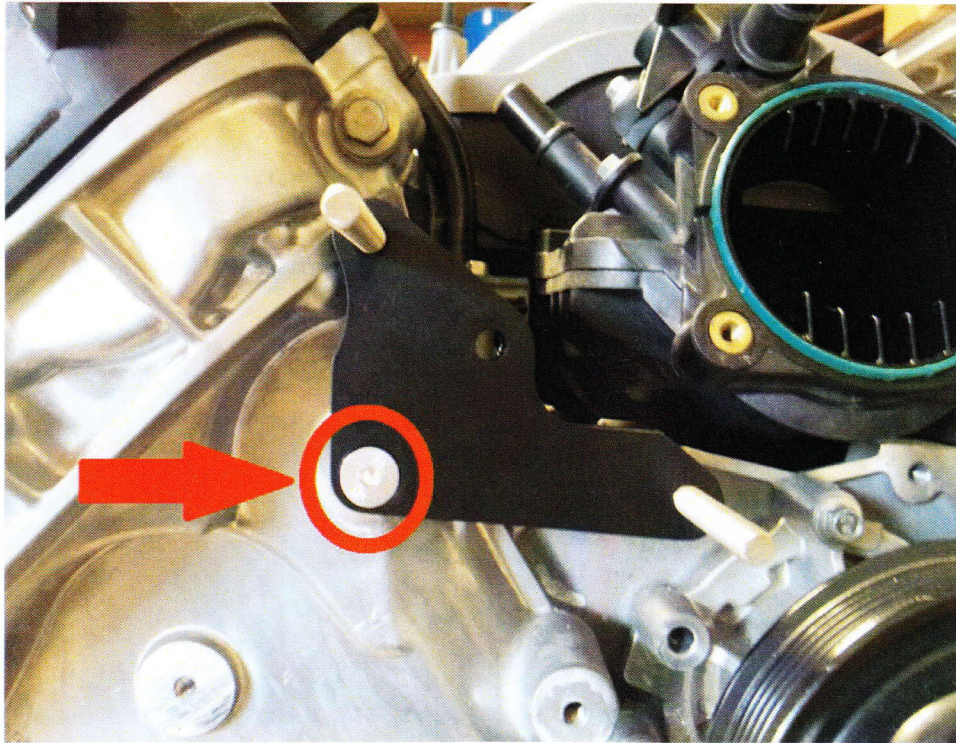
6. Install the 3/4" x 2.800" spacer by sliding it over the 8mm x 6.250" threaded rod.



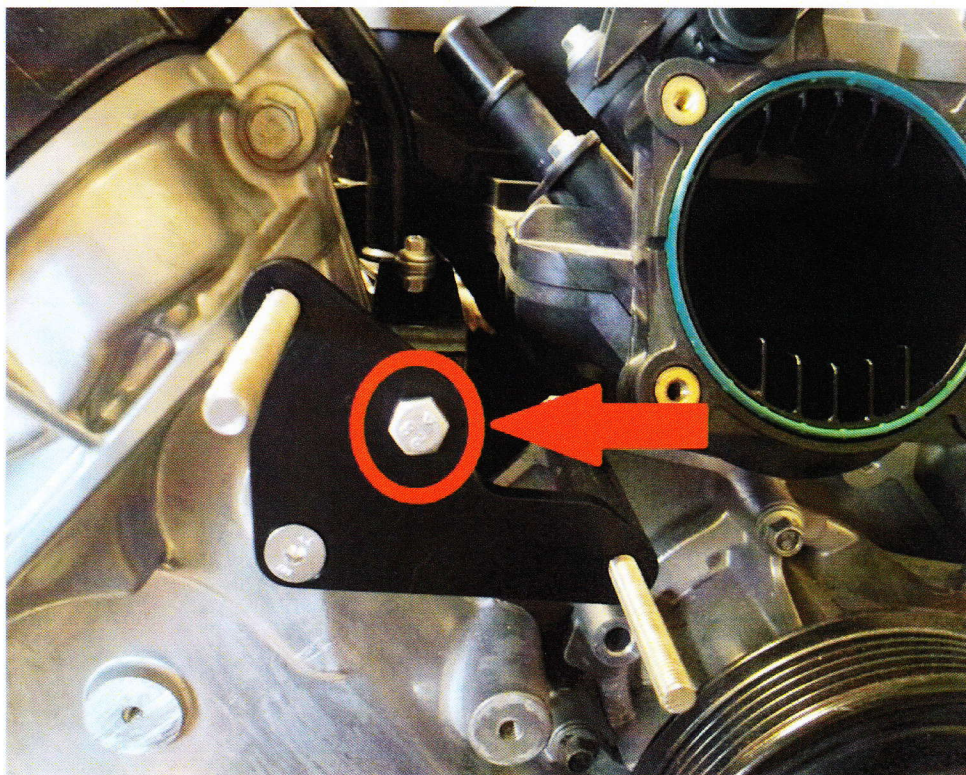
7. Install the triangular bracket with 8mm x 3" stud. With the stud facing out and notch in the bracket facing up. Slide far right hole over the 8mm x 6.250" stud installed in step 5.



8. Install 8mm x 25mm pan head bolt into the hole that was drilled and tapped in step 1.



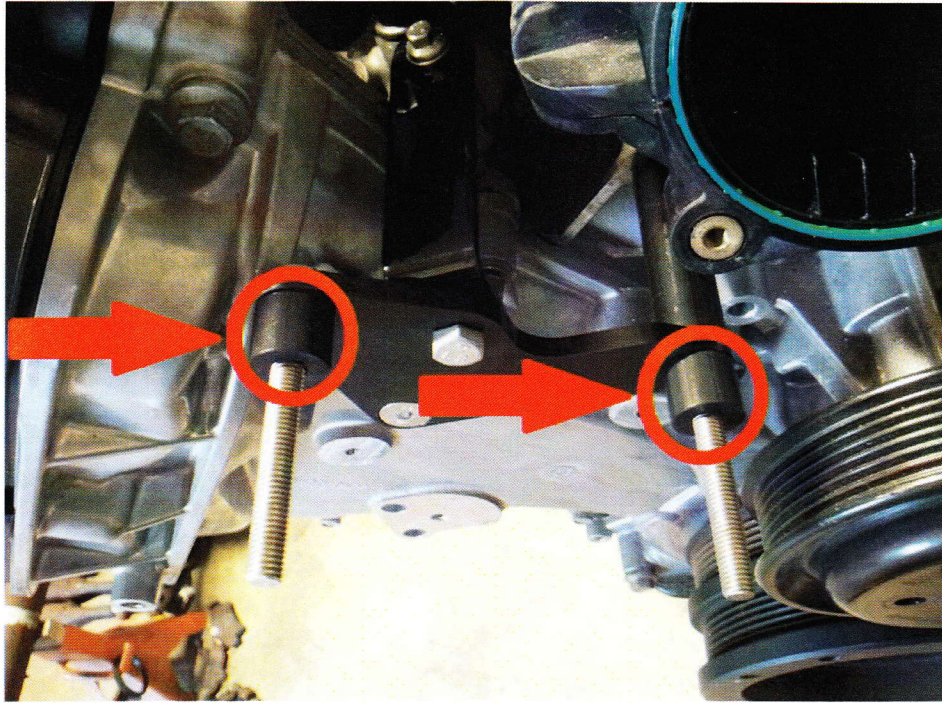
9. Bolt the triangular bracket installed in step 7 and "L" bracket install in step 4 together using (1) 8mm x 20mm bolt and (1) 8mm nut supplied.



10. Re-tighten 6mm bolt from step 5.

11. Select the correct hardware for the alternator being used. Take the (2) spacers and slide them over each one of the studs.





12. Install the alternator with pulley facing the engine.

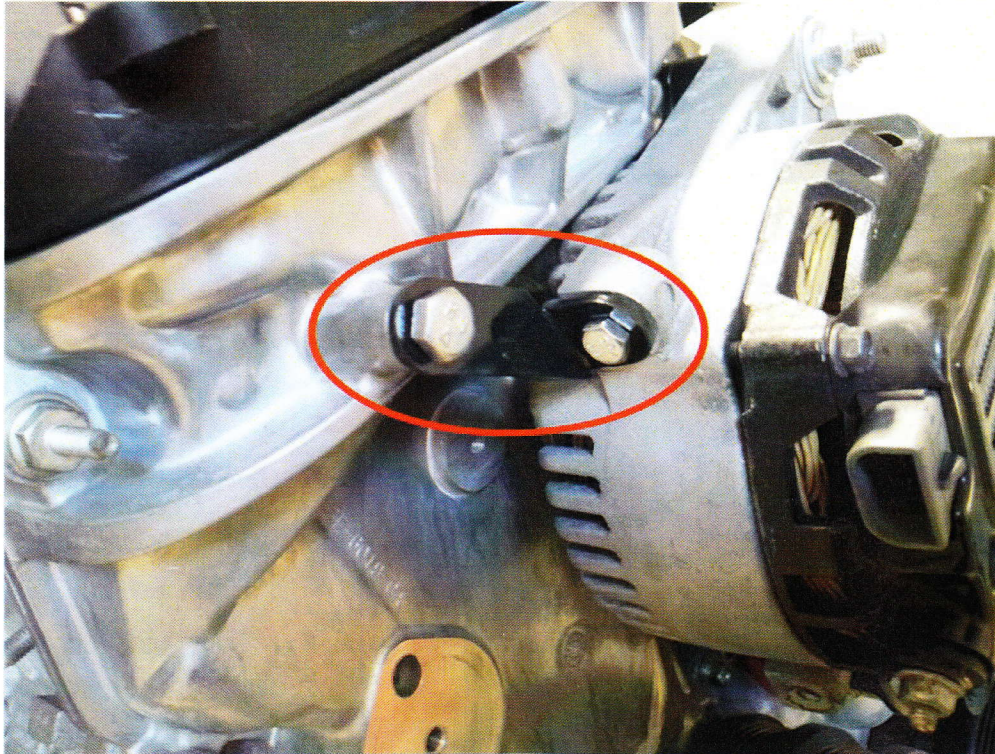
**Note:** Some clearancing of the timing cover may be necessary to clear alternator.

13. Install the alternator belt (part # 5060535) by hanging it over the alternator pulley.

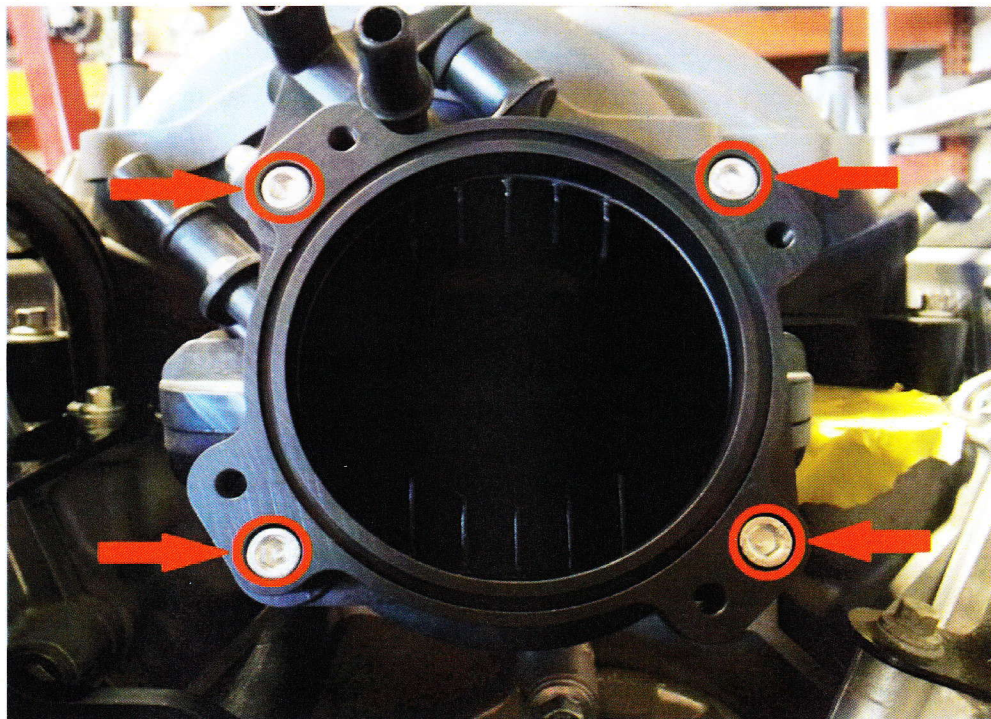
14. Install (1) large 8mm washer (1) 8mm lock washer, and (1) 8mm nut on each stud to hold alternator.



14. a. If using a 1996-2001 Cobra alternator you will need to install the small "L" bracket with 8mm and 6mm bolt provided.

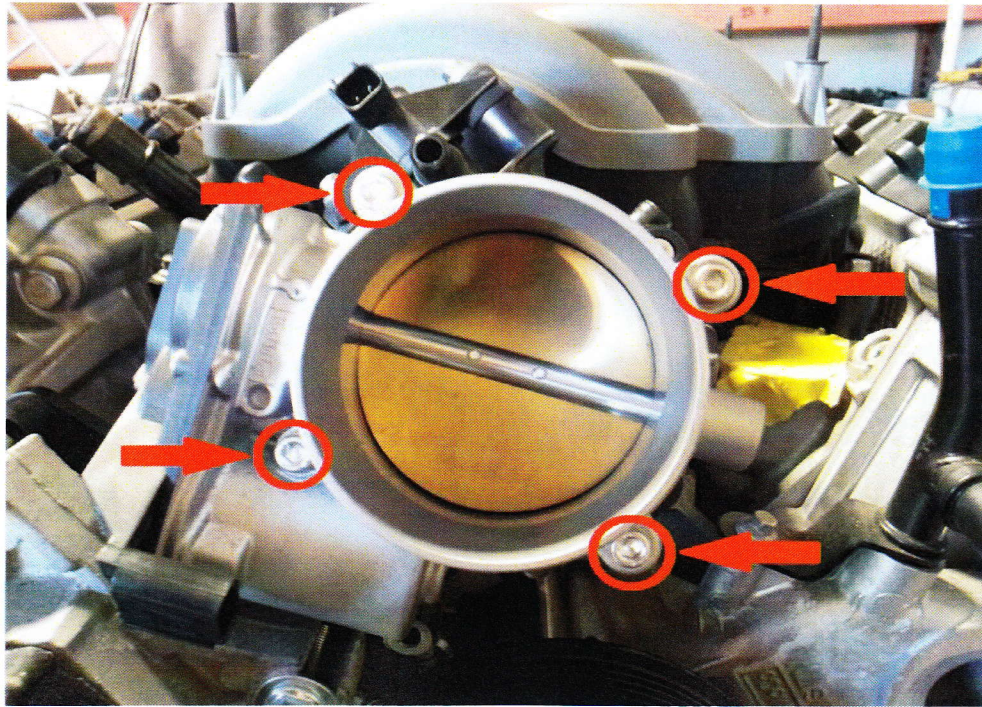


15. Install the throttle body spacer. Attach the throttle body spacer to the intake manifold using (4) 6mm x 25mm allen head bolts.



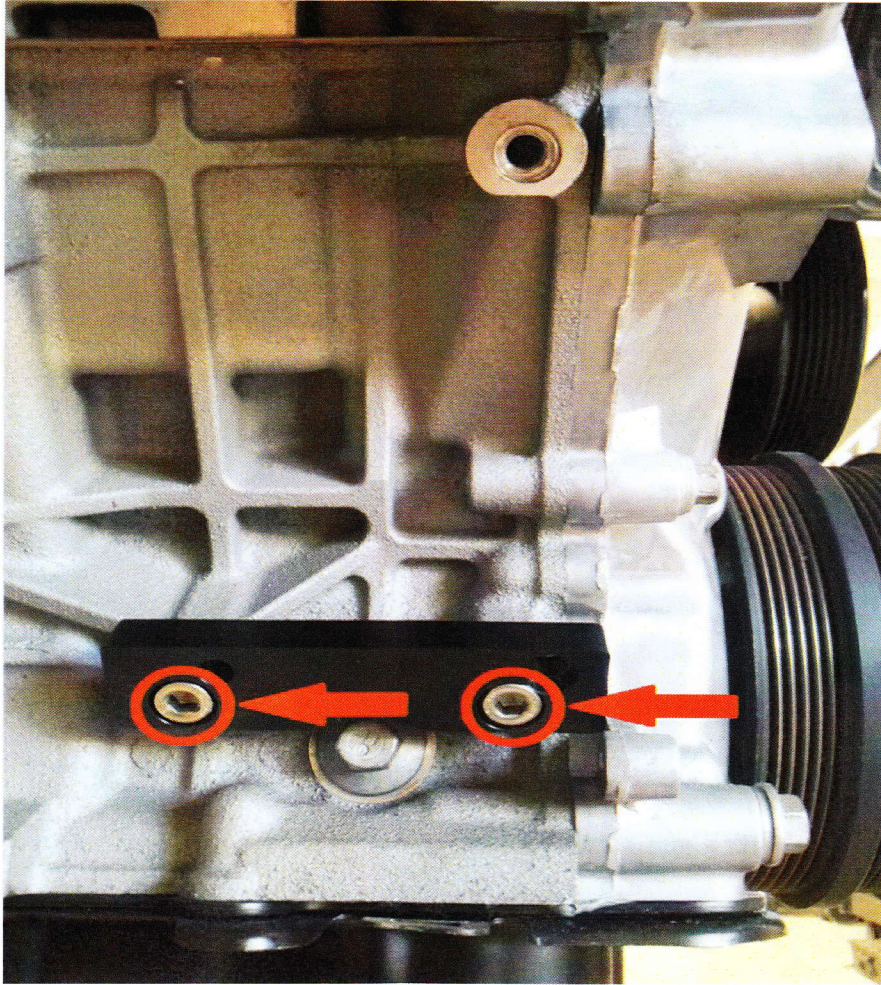
16. Install the throttle body O-ring provided into the groove on the throttle body spacer.

17. Re-install the throttle body using the (4) 6mm x 45mm allen head bolts supplied.

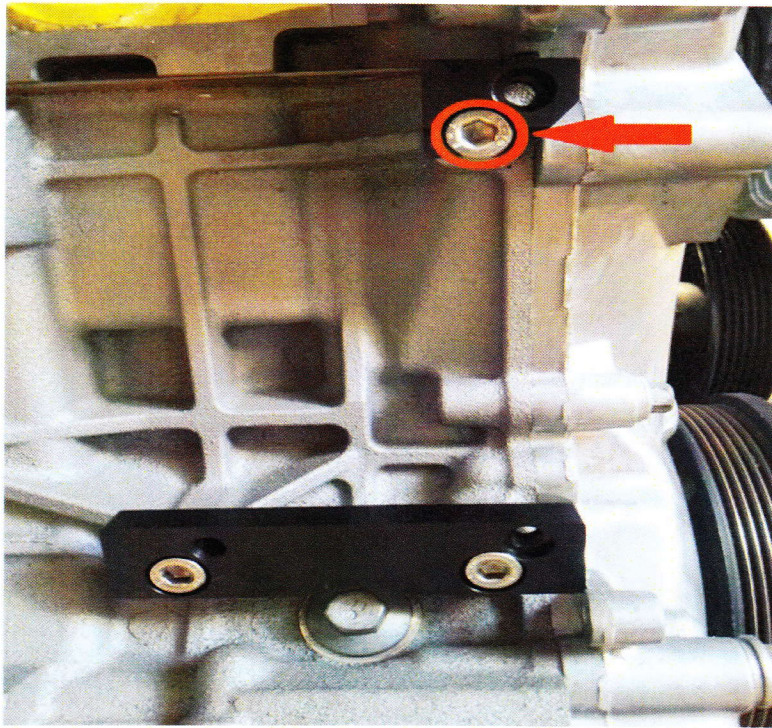


### **Installing the A/C brackets**

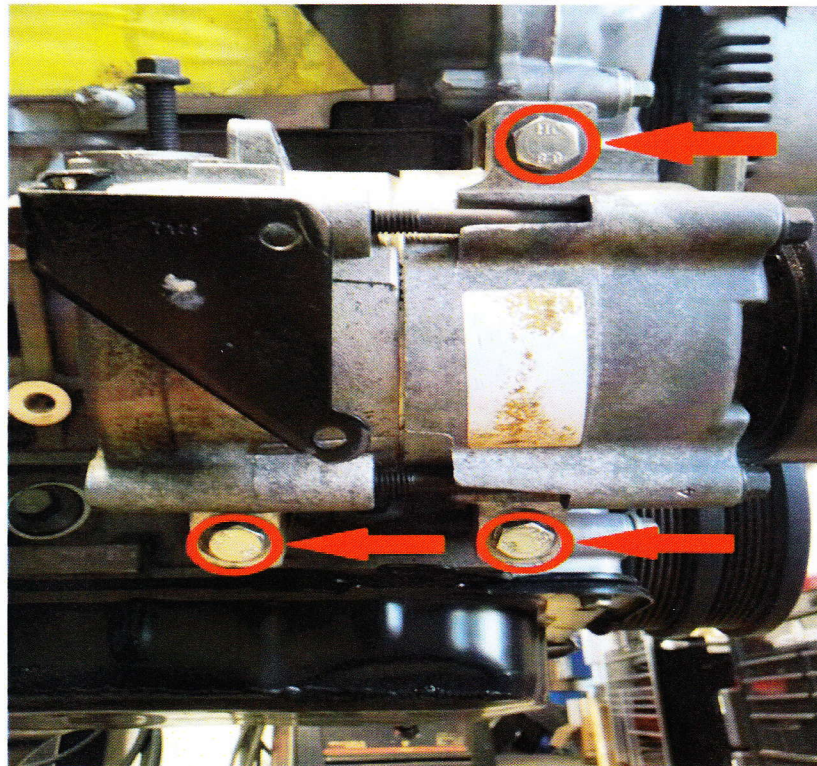
1. Install the lower A/C bracket this is the longer of the two brackets with (4) holes. Place the lower A/C bracket on the passenger side of the engine block over the original A/C mounting holes. With the larger holes of the bracket on the bottom install (2) 8mm x 30mm bolts to attach the bracket to the block.



2. Next install the upper A/C bracket. This is the shorter bracket with only two holes. Place the upper A/C bracket over the original A/C mounting hole. With the larger hole on the bottom install (1) 8mm x 30mm bolt to attach the bracket. This bracket will need to be squared up to the bottom bracket before tightening.



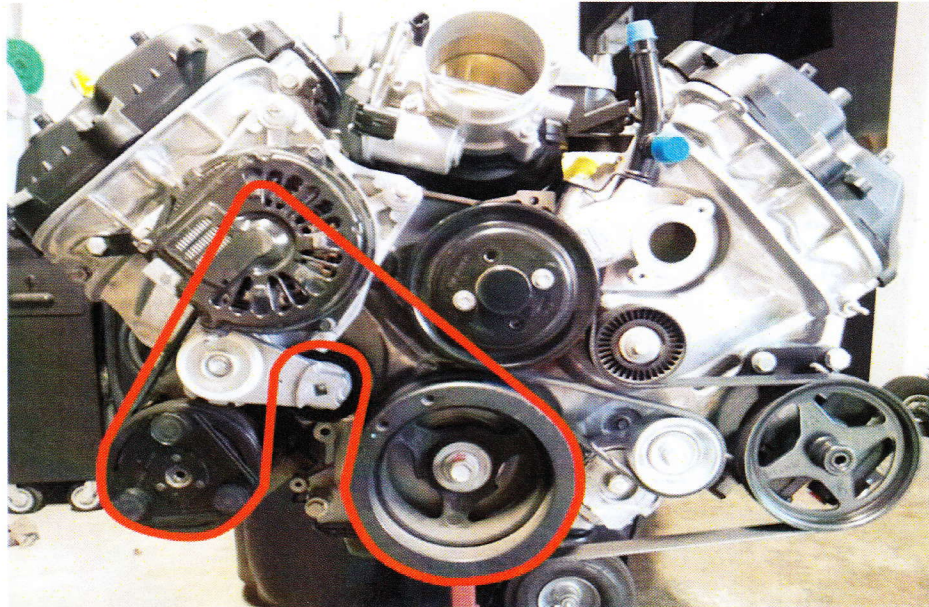
3. Now install the A/C compressor using (3) 8mm x 95mm bolts supplied.



**Note:** 1996-2001 Cobra or 1996-2010 GT A/C compressor should be used.

## Installing tensioners and belts

1. Install the tensioner part # BT-111 with supplied bolt on the passenger side of the motor.
2. Install the belt part # 5060535.



3. Install tensioner part # BT-104 with supplied bolt on drivers side of motor.
4. Install belt part # 5060720

