



Instr. No. 2650-458A

SPORT-COMP Shift-Lite INSTALLATION INSTRUCTIONS TACH WITH MEMORY MODEL 3906

For use on standard and most electronic ignitions.



Important Note

This tach has an air core meter movement. The tach pointer may not always rest at zero. This is normal. When 12 V power is supplied, the pointer will position to the correct rpm.

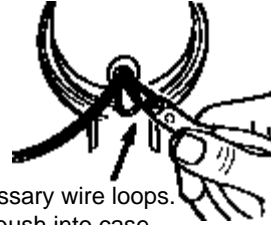
Calibration

IMPORTANT: This tachometer is factory calibrated to operate on 8 cylinder engines. For 4 or 6 cylinder engines, it is necessary to make the proper adjustments to adapt this tach-meter to your cylinder range. Simply clip the necessary wire loops as shown. Insulate wires with electrical tape to prevent electrical shorts.

8 CYL.— NO adjustment is necessary.

6 CYL.— Clip BROWN wire loop only.

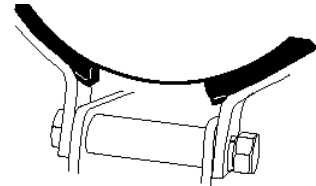
4 CYL.— Clip BROWN and ORANGE wire loops.



Clip necessary wire loops.
Do not push into case.

Mounting

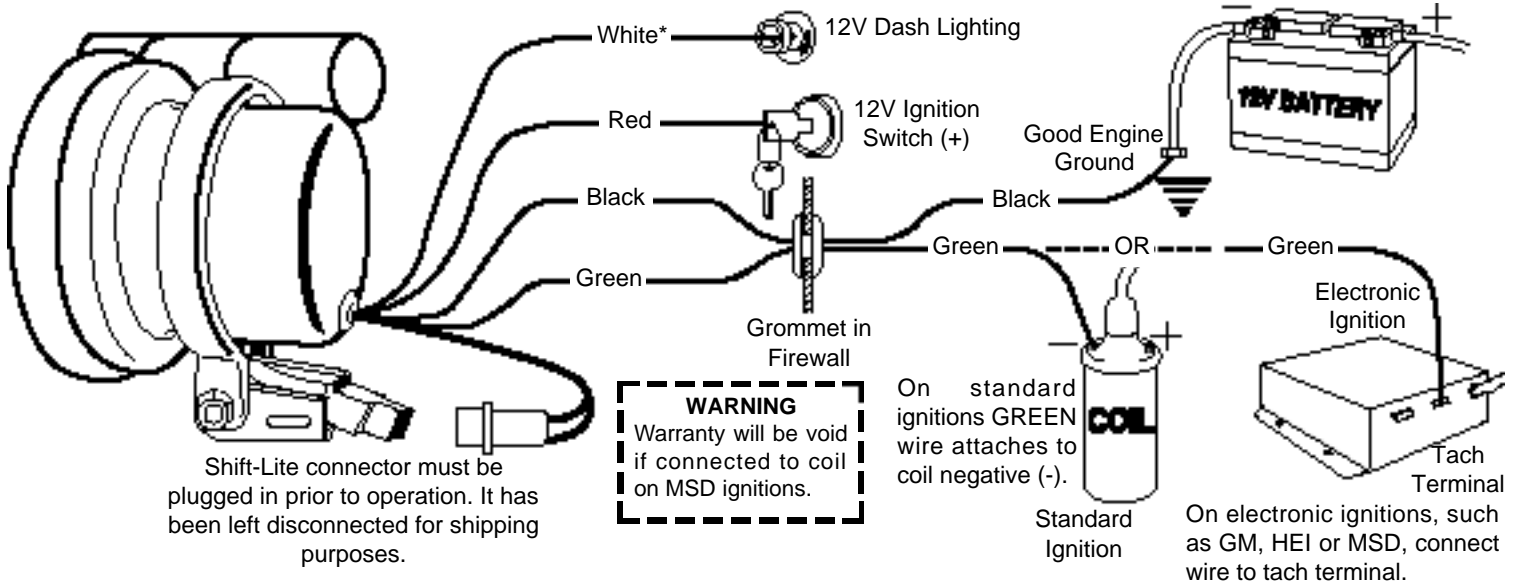
The special design of the tachometer base allows for a variety of mounting possibilities. Attach the base using screws provided or use a pop rivet tool.



Wiring

Note: This tach operates on standard, factory electronic and high performance electronic racing ignitions, such as Hy Fire and MSD. (This tach is NOT recommended for use on Accel BEI or Laser I & II ignitions. These ignitions require model 5215 adaptor.)

*If tach is not equipped with white wire, light is powered by RED 12V positive tach lead.



Lens Cleaning

The clear lens on your tachometer is made of acrylic plastic. To prevent scratching caution must be used when cleaning. Use a mild, soapy solution and soft cloth to clean. Wipe lightly.



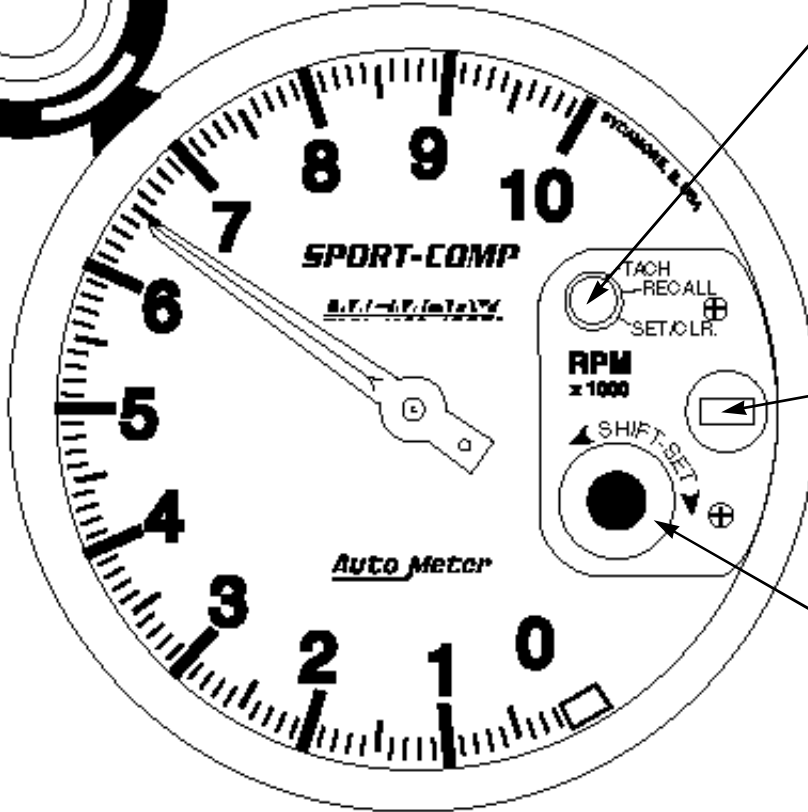
Shift-Point Selection

1. Turn the function knob to the SET/CLR position to clear the memory and to set the desired shift point.
2. To set your desired shift-point, depress the Shift-Set button and turn until the pointer indicates the desired shift RPM.
3. Return the function knob to the TACH position for normal operation.
4. During normal tachometer operation, the Shift-lite will activate at the exact same RPM set during Shift-Set selection.

NOTE: Any time power is applied to the tach, the Shift-Lite will light briefly to self-test the bulb.

WARNING
Check the engine builder for maximum recommended safe shift point before setting shift point on tach. Failure to do this could lead to over-revving of engine, causing serious damage to engine and car.

Shift-lite: For bulb replacement, remove three screws on light. The bulb, located in the rear section, is easily removed by pushing and rotating it counter-clockwise. Replace with #1076 automotive bulb.



FUNCTION KNOB
TACH Position: Normal operation.
RECALL Position: Turn to this position to recall peak RPM.
SET/CLR. Position: In this position it always clears the memory. It also allows you to set the Shift-Lite RPM.

Dial Light: For wedge base bulb replacement, order Auto Meter 3219 or GE 86 bulb. Turn socket 1/8 turn counter-clockwise to remove.

Shift-Set: To operate, turn the function knob to SET/CLR. Depress the Shift-Set knob and turn the knob until the pointer indicates the desired shift RPM. This is exactly where the Shift-Lite will turn on. Return the function knob to the TACH position.

SERVICE

For service send your product to Auto Meter in a well packed shipping carton. Please include a note explaining what the problem is along with your phone number. Please specify when you need the product back. If you need it back immediately mark the outside of the box "RUSH REPAIR," and Auto Meter will service product within two days after receiving it. (\$10.00 charge will be added to the cost of "RUSH REPAIR.") If you are sending product back for Warranty adjustment, you must include a copy (or original) of your sales receipt from the place of purchase.

12 MONTH LIMITED WARRANTY

Auto Meter Products, Inc. warrants to the consumer that all Auto Meter High Performance products will be free from defects in material and workmanship for a period of twelve (12) months from date of the original purchase. Products that fail within this 12 month warranty period will be repaired or replaced at Auto Meter's option to the consumer, when it is determined by Auto Meter Products, Inc. that the product failed due to defects in material or workmanship. This warranty is limited to the repair or replacement of parts in the Auto Meter instruments. In no event shall this warranty exceed the original purchase price of the Auto Meter instruments nor shall Auto Meter Products, Inc. be responsible for special, incidental or consequential damages or costs incurred due to the failure of this product. Warranty claims to Auto Meter must be transportation prepaid and accompanied with dated proof of purchase. This warranty applies only to the original purchaser of product and is non-transferable. All implied warranties shall be limited in duration to the said 12 month warranty period. Breaking the instrument seal, improper use or installation, accident, water damage, abuse, unauthorized repairs or alterations voids this warranty. Auto Meter Products, Inc. disclaims any liability for consequential damages due to breach of any written or implied warranty on all products manufactured by Auto Meter.

FOR SERVICE SEND TO: **AUTO METER PRODUCTS, INC.** 413 W. Elm St., Sycamore, IL 60178 USA (815) 895-8141
Email us at service@autometer.com