

## PART #2227

### 05-06 MUSTANG DUCKTAIL WING

**Notice:** Prefit Before Painting. Install new, unpainted parts according to these instructions. Then remove parts, paint them and re-install.

#### Painted or Altered Parts are Non-Refundable

The surface that is in contact with the 3M 2-sided tape must be cleaned with isopropyl alcohol & the temperature must be a minimum of 75 degrees F, before applying . Allow the 2-sided tape to dry 24 hours before driving.

**Pre-fitting the trunk and quarter extensions:** If you have a factory trunk wing, it will need to be removed. This wing will cover the holes in the trunk. Hold the trunk extension in place and check the alignment from the left to the right. Remove the trunk extension and hold in place the quarter extensions, check the alignment with the quarter panel and the rear bumper.

**Step 1,** installing the trunk wing: Use the supplied template to locate where the holes need to be drilled. Line up the template with both sides of the trunk and factory wing hole as shown in **fig A**. Tape the template in place. Drill a 1/4" hole in the indicated locations. Flip the template to the other side of the trunk and repeat. Included in the hardware packet are two rolls and six squares of 3m double sided tape. After the trunk extension has been painted, install the 3m double sided tape along the guidelines an 1/8" away from the outer edge and along the brake light opening as shown in **fig B and C**. Peel and fold about 2" of the red backing from the ends of each piece of tape, also fold the backing from each square of tape. Then place the trunk extension on the trunk so that the backing is exposed and can be pulled (this will allow you to get the best alignment of the part). Pull the backing slowly. After all the backing is removed, firmly press the edges of the extension to securely adhere the tape. Open the trunk and install the screws in the front of the trunk extensions.

**Step 2,** installing the quarter extensions: After the quarter extensions have been painted, install the 3m double sided tape along the guidelines an 1/8" away from the outer edge as shown in **fig D**. Peel and fold about 2" of the red backing from each piece of tape, then place the trunk extension on the quarter panel so that the red backing is exposed and can be pulled (this will allow you to get the best alignment of the part). Pull the backing slowly. After all the backing is removed, firmly press the edges of the extension to securely adhere the tape.

PART #2227		
QTY	DESCRIPTION	HARDWARE #
1	ROLL OF 2-SIDED TAPE	VHB 230
1	ROLL OF 2-SIDED TAPE 30"	NOR-05620
12	FLATHEAD PHILLIPS	10947-01704
6	2X2 SQUARE 3M 2-SIDED TAPE	VHB 2X2



## PART #2227

FIG B.

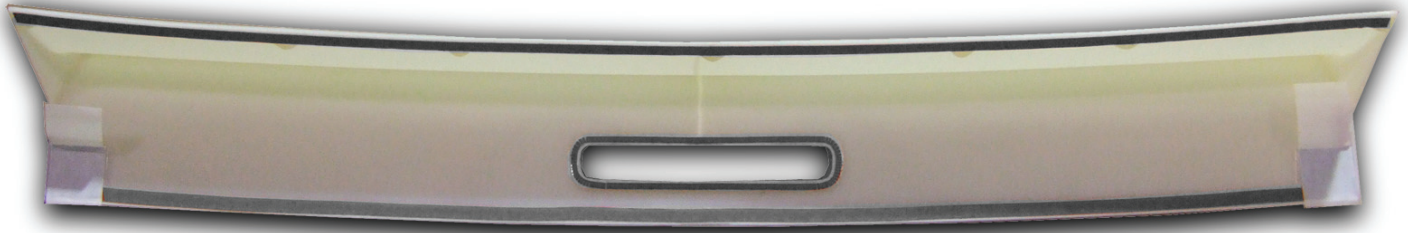


FIG C.

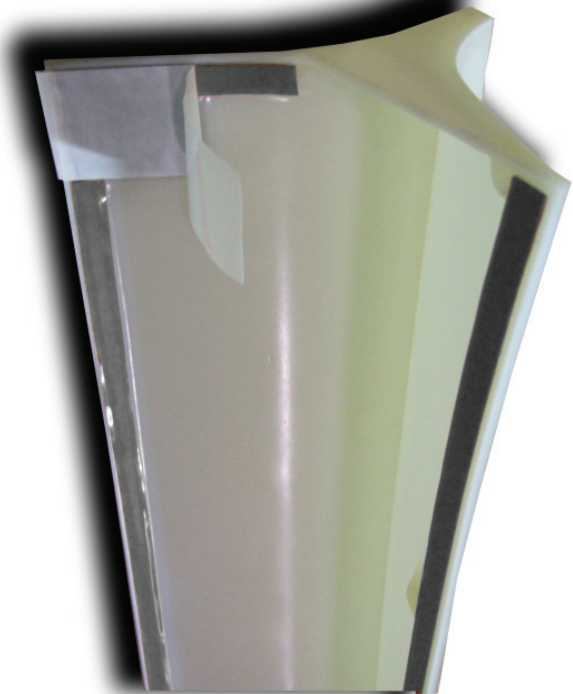


FIG D.



### PAINTING INSTRUCTIONS

**VERY IMPORTANT: The following painting procedures MUST be followed EXACTLY for PROPER ADHESION and to prevent fish eyes.**

1. To remove any mold release contaminants, clean the back of the part first. Using 2 new clean rags, saturate the first rag with plastic prep cleaner\* and begin cleaning. Then use the second rag to remove the prep cleaner. Continuously fold both rags to their clean sides during the process. Use 3 sets of new rags throughout the process. This prevents mold release contaminants from transferring to the painted surface.
2. Repeat step one on the front of the part.
3. Rinse the part with water. Apply a generous amount of Ajax® or sand fix\* to a red scuff pad\* (3M Scotch Brite Brand) and scrub the surface to be painted THOROUGHLY (especially where the 2-sided tape is installed, on the back side of the part, and all the hard to reach areas). Then rinse with water and dry. The scrubbed surface should be dull. If any shiny spots show, repeat the process on those areas.
4. Using another set of clean new rags, again clean the surface to be painted with plastic prep cleaner.
5. Spray the surface to be painted with adhesion promoter\* including the areas where the 2-sided tape is installed (follow the instructions on the can for application and drying time).
6. Apply 3 to 4 coats of urethane primer\* with flex additive\* (follow the instructions on the can for application and drying time).
7. Wet sand primer with 600 grit sandpaper. Be careful not to sand through the primer. If you do, you MUST clean those areas with plastic prep cleaner, apply adhesion promoter and prime. Once the primer has dried, wet sand the areas that were touched up. Your surface is now ready for paint.

\* These items can be purchased at any auto body supply store.

